


# JUNCTION BOXES

---

  
**woertz**



## AND CABLE BOXES

Woertz AG  
Hofackerstrasse 47, P.O. Box 948, CH-4132 Muttenz 1, Switzerland  
Phone ++41 (0)61 466 33 33, Fax ++41 (0)61 461 96 06  
[www.woertz.ch](http://www.woertz.ch)

Woertz USA  
151 Discovery Drive, Unit 111  
Colmar, PA 18915  
Phone (215) 997 8855, Fax (800) 522-3868  
[www.woertz-usa.com](http://www.woertz-usa.com), e-mail: [woertz1@erols.com](mailto:woertz1@erols.com)



**Junction boxes and cable boxes** **pages 4.1.4 to 4.1.17**

Junction boxes of thermosetting material, white, for TT- (Tdc) cables .....	page 4.1.4
Junction boxes with base-plate and cover of thermosetting material, light grey .....	pages 4.1.5+4.1.6
Junction boxes with base-plate of sheet steel and cover of thermosetting material, white .....	pages 4.1.7+4.1.8
Junction boxes with base-plate and cover of sheet steel, grey .....	page 4.1.9
Junction boxes of thermoplastic .....	page 4.1.10
Boxes of polyester, type Rose .....	pages 4.1.11 - 4.1.14
Junction boxes of thermosetting material, grey, 90 x 90 x 54 mm .....	page 4.1.15
Junction boxes of thermosetting material, grey, 120 x 120 x 68 mm .....	page 4.1.16
Junction boxes of thermosetting material, grey, 180 x 130 x 80 mm .....	page 4.1.17

# Junction boxes of thermosetting material, white, for TT- (Tdc) cables up to 4 x 1.5 mm<sup>2</sup>



- Only for use in dry media
- Two-part casing with pre-scored inlets
- Terminal with one headless screw, with clamping ring, for through conductors, of nickel-plated brass, steatite base.
- Protected by spring against working loose
- Halogen-free



## Article numbers

Cross-section  
Ratings

3 x 1.5 mm<sup>2</sup>  
500V/10A

4 x 1.5 mm<sup>2</sup>  
500V/10A

with terminals 2P + PE

2977C

with terminals 3P + PE

2974C



## Technical data

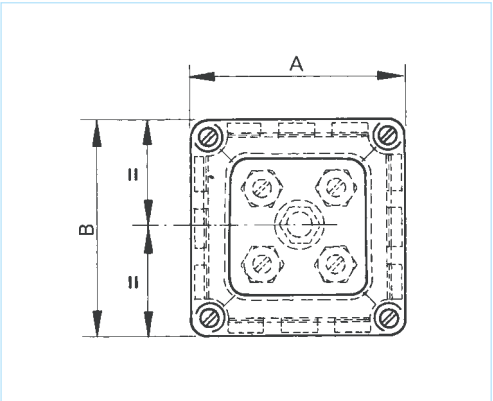
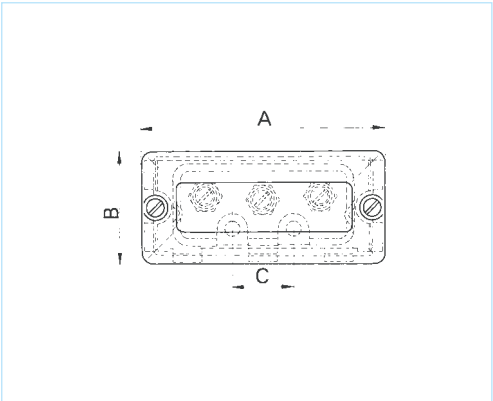
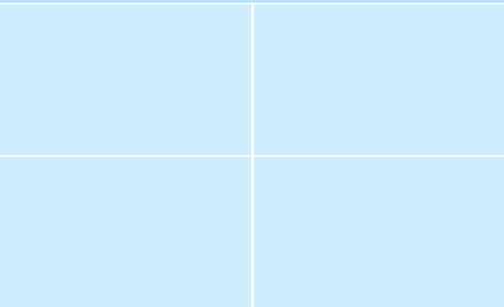
A mm  
B mm  
Height mm  
Distance between holes C mm  
Fastening holes Ø mm  
  
Packing unit pcs

64  
30  
22  
15  
4.5  
  
10

50  
50  
23  
  
4.5 (in the middle)  
  
10



## Accessories



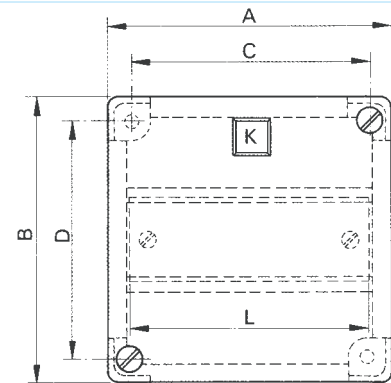
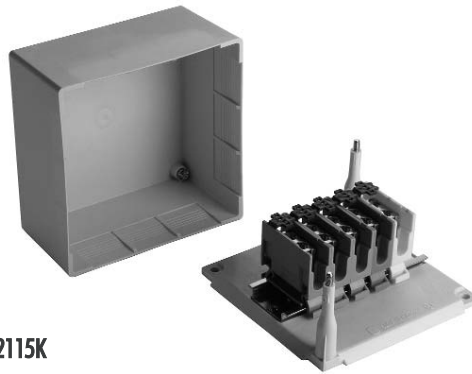
# Junction boxes with base-plate and cover of thermoplastic, light grey

2.5-10 mm<sup>2</sup>



- Base-plate with mounting rail according to EN 60715 TH 35
- Unbreakable, self-extinguishing
- Inlets to be cut out
- Sliding label L-K-W-S
- Sealable cover nuts
- With two-screw terminals of polyamide of the range 30840... with removable sliding cover for through conductors.
- Metal parts of nickel-plated brass.

2115K



## Article numbers

Cross-section	5 x 2.5 mm <sup>2</sup> 500V/16A		5 x 6 mm <sup>2</sup> 500V/41A		5 x 10 mm <sup>2</sup> 500V/57A	
Ratings						
with terminals 3P + N + PE	2094/5K*		2185K		2115K	
with rail, without terminals	2079K		2078K		2080K	
without rail	2069K		2068K		2070K	



## Technical data

A	mm	78	95	115
B	mm	78	95	115
Height	mm	44	51	60
Distance between holes C	mm	60	77	97
Distance between holes D	mm	60	77	97
Length of rail L	mm	62	79	99
Fastening holes Ø	mm	5.3	5.3	5.3
Packing unit	pcs	10	10	5
		*2094/5K: PU = 20 pcs		



## Accessories

Replacement cover		31069	31064	31063
Packing unit	pcs	10	10	5

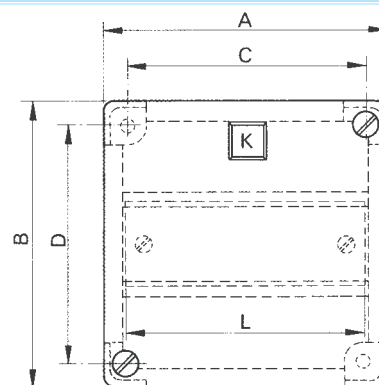
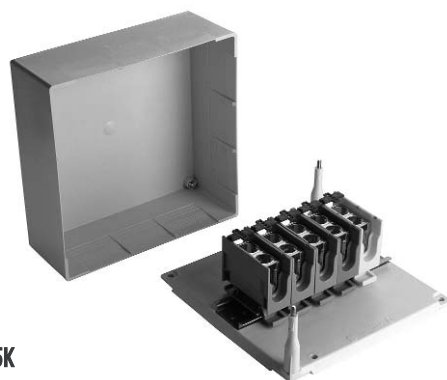
# Junction boxes with base-plate and cover of thermoplastic, light grey

16+35 mm<sup>2</sup>



- Base-plate with mounting rail according to EN 60715 TH 35
- Unbreakable, self-extinguishing
- Inlets to be cut out
- Sliding labels L-K-W-S
- Sealable cover nuts
- With two-screw terminals of polyamide, of the range 30840... with removable sliding cover for through conductors.
- Metal parts of nickel-plated brass.

2145K



## Article numbers

Cross-section

Ratings

5 x 16 mm<sup>2</sup>

500V/63A

5 x 35 mm<sup>2</sup>

500V/100A

with terminals 3P + N + PE

2125K

2145K

with rail, without terminals

2081K

2081K

without rail

2071K

2071K



## Technical data

A	mm	160	160
B	mm	160	160
Height	mm	62	62
Distance between holes C	mm	142	142
Distance between holes D	mm	142	142
Length of rail L	mm	144	144
Fastening holes Ø	mm	5.3	5.3
Packing unit	pcs	5	5



## Accessories

Replacement cover

31066

31066

Packing unit

pcs

5

5

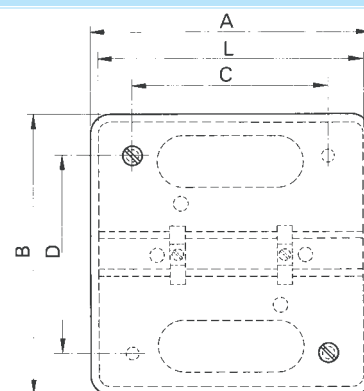
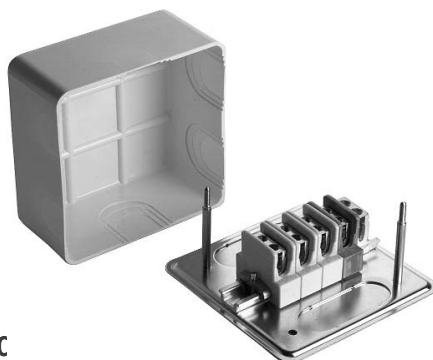
# Junction boxes w. base-plate of sheet steel and cover of thermosetting mat., white

2.5+6 mm<sup>2</sup>



- Corrosion-proof base-plate of sheet steel with riveted Woertz rail No. 4050A (see brochure "Screw terminals", page 1.1.134)
- Pre-scored inlets
- Sealable cover nuts
- With two-screw steatite terminals, of the range 4020... with removable sliding cover for through conductors. Metal parts of nickel-plated brass.
- Halogen-free cover

2185C



## Article numbers

Cross-section	5 x 2.5 mm <sup>2</sup> 500V/16A		5 x 6 mm <sup>2</sup> 500V/41A		5 x 6 mm <sup>2</sup> 500V/41A	
Ratings						
with terminals 3P + N + PE	2095C		2185C/95		2185C	
with rail, without terminals	2078C		2078C		2080C	



## Technical data

A	mm	95	95	115
B	mm	95	95	115
Height	mm	46	46	59
Distance between holes C	mm	77	77	78
Distance between holes D	mm	77	77	78
Length of rail L	mm	87	87	106
Fastening hole Ø	mm	5	5	5
Packing unit	pcs	10	10	5



## Accessories

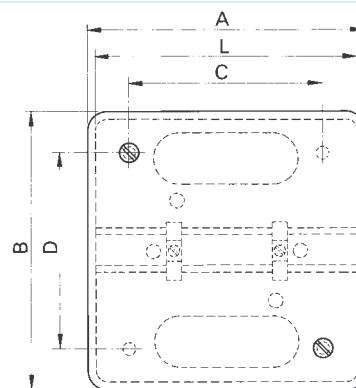
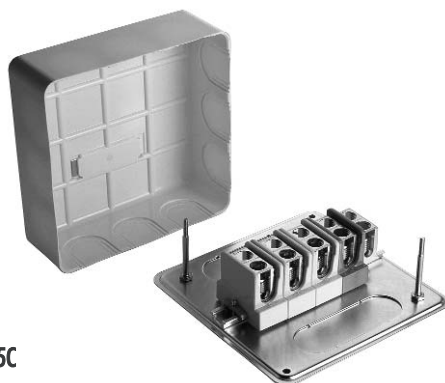
Replacement cover		31061	31061	31062
Packing unit	pcs	10	10	5

# Junction boxes w. base-plate of sheet steel and cover of thermosetting mat., white 10-35 mm<sup>2</sup>



- Corrosion-proof base-plate of sheet steel with riveted Woertz rail No. 4050A (see brochure "Screw terminals" page 1.1.134)
- Pre-scored inlets
- Sealable cover nuts
- With two-screw steatite terminals, of the range 4020S... with removable sliding cover for through conductors. Metal parts of nickel-plated brass.
- Halogen-free cover

2145C



## Article numbers

Cross-section Ratings	5 x 10 mm <sup>2</sup> 500V/57A		5 x 16 mm <sup>2</sup> 500V/63A		5 x 35 mm <sup>2</sup> 500V/100A	
with terminals 3P + N + PE	2115C		2125C*		2145C	
with rail, without terminals	2080C		2081C		2081C	



## Technical data

A	mm	115	160	160
B	mm	115	160	160
Height	mm	59	60	60
Distance between holes C	mm	78	142	142
Distance between holes D	mm	78	142	142
Length of rail L	mm	106	155	155
Fastening hole ∅	mm	5	5	5
Packing unit	pcs	5	5 * 2125C: PU = 4 pcs	5



## Accessories

Replacement cover		31062	31065	31065
Packing unit	pcs	5	5	5



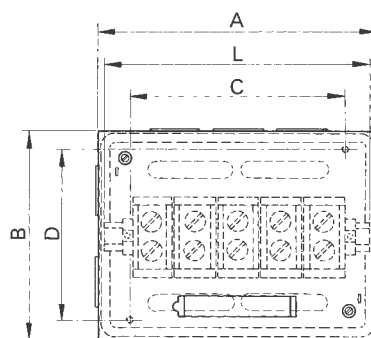
# Junction boxes with base-plate and cover of sheet steel, grey

70 + 120 mm<sup>2</sup>



- Corrosion-proof base-plate of sheet steel with riveted Woertz rail No. 4050A or with mounting rail according to EN 60715 TH 35
- Cover of sheet steel with pre-scored inlets
- Sealable cover nuts
- With two-screw steatite terminals of the series 4030S on Woertz rail or polyamide terminals series 3468GR with removable sliding cover for through conductors.
- Metal parts of nickel-plated brass.

2155



## Article numbers

Cross-section

Ratings

5 x 70 mm<sup>2</sup>

500V/150A

5 x 120 mm<sup>2</sup>

500V/250A

with steatite terminals 3P + N + PE

2155

2165

with polyamide terminals 3P + N + PE

2165/3468\*

2165/3469

with Woertz rail, without terminals

2082

2083

with EN rail 35mm, without terminals

2082/35

2083/35



## Technical data

A mm  
B mm  
Height mm  
Distance between holes C mm  
Distance between holes D mm  
Length of rail L mm  
Fastening hole  $\varnothing$  mm

200

150

67

160

125

193

5

250

180

95

225

72

235

5

Packing unit pcs

4

1

\* 2165/3468: PU=1 pcs



## Accessories

Replacement cover

31067

31068

Packing unit pcs

4

1

Note

\*2165/3468 should be equipped with a junction box 250 x 180 x 95 mm.

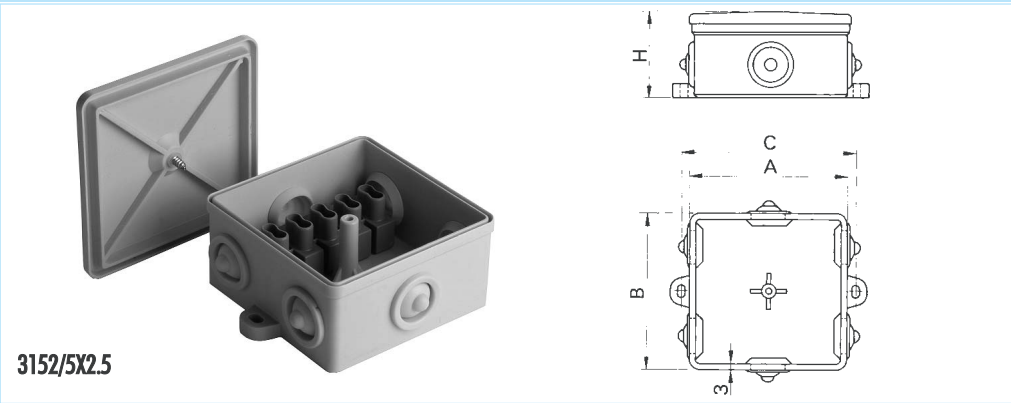
# Junction boxes of thermoplastic

up to 5 x 2.5 mm<sup>2</sup>



## IP54 International Protection DIN 40050

- Hardly combustible
- Impact resistant
- Splash-proof
- With central bolt
- With central screw for fastening cover
- With two fixing straps outside



3152/5X2.5



## Article numbers

Cross-section	with 6 inserted thermoplastic connecting pieces size 1 max. feed-through 16mm 500V	
Ratings		
empty, without terminals	3152	
with terminals with blind hole 5x2.5mm <sup>2</sup>	3152/5X2.5	



## Technical data

A	mm	80
B	mm	80
H	mm	40
Distance between holes C	mm	86
Fastening hole Ø	mm	4.2
Internal dimensions	mm	72 x 72 x 34
Packing unit	pcs	5



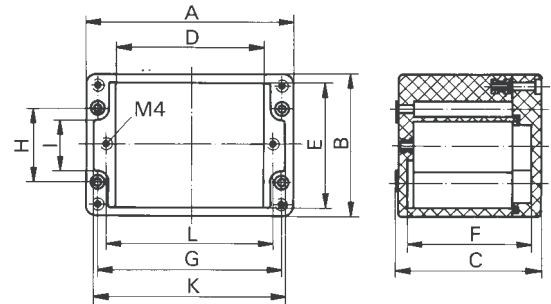
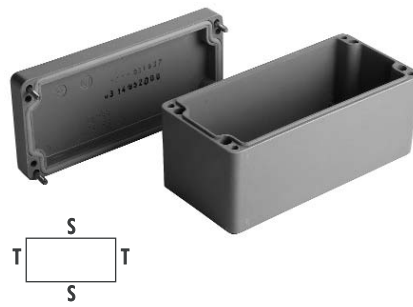
## Accessories

Thermoplastic connecting piece, size 1, can be inserted individually into pre-scored inlets Ø 19mm max. feed-through 16mm	5900
Terminals with blind hole conductors can only be inserted from one side 5 x 2.5 mm <sup>2</sup>	5622/5
Burning behaviour according to UL 94 Toxicity	V2 halogen-free



## IP65 International Protection DIN 40050

- Housing of glass-fibre reinforced polyester
- Grey RAL 7000
- Temperature resistance of seal: - 40° C to + 100° C
- Captive cover screws of stainless steel
- Grooves for fastening screws outside the tight housing (box without external fixing lug)
- Bore scheme according to request
- Other housing dimensions and special sealings available on request



## Article numbers

	inlet cut into sides of housing housing available with inlets M16, M20, M25, M32 or M40			
	49151	49152	49153	
empty box, without inlet				
box without inlet, with mounting rail according to EN 60715 TH15-5.5	49151/15	49152/15	49153/15	



## Technical data

External dimensions A x B x C	mm	80 x 75 x 56	110 x 75 x 56	160 x 75 x 76
Internal dimensions D x E x F	mm	50 x 66 x 47	80 x 66 x 47	130 x 66 x 66
G	mm	68	98	148
H	mm	45	45	39
Bores Ø	mm	4.3	4.5	4.5
I	mm	33	33	27
K	mm	71	101	151
L	mm	59	89	139
Metric inlets on each side of casing				
S		max. 1 x M32	max. 1 x M32	max. 2 x M40
T		max. 1 x M25	max. 1 x M25	max. 1 x M25
Price class*		0	1A	1
Packing unit	pcs	1	1	1



## Accessories

Terminal sets complete, for mounting	8 x 2.5mm <sup>2</sup> 80451	14 x 2.5mm <sup>2</sup> 80454	24 x 2.5mm <sup>2</sup> 80455
installation height	31mm	31mm	31mm
Mounting rail EN 60715 TH 15-5.5 with fastening holes			
with bare earthing terminal	1 x 2721	1 x 2721	1 x 2721
Terminals 2.5mm <sup>2</sup>	7 x 2760	13 x 2760	23 x 2760
End barrier	1 x 2764	1 x 2764	1 x 2764
Stopper	1 x 2754	1 x 2754	1 x 2754
Burning behaviour according to UL 94	V0 (self-extinguishing)	V0 (self-extinguishing)	V0 (self-extinguishing)
Toxicity	halogen-free	halogen-free	halogen-free
Resistance to atmospheric conditions	insensitive to UV	insensitive to UV	insensitive to UV
Insulation according to VDE 0100	completely insulated	completely insulated	completely insulated
Impact resistance according to DIN 50014	>7Nm	>7Nm	>7Nm
Water absorption according to ASTM D 570	max. 0.7%	max. 0.7%	max. 0.7%

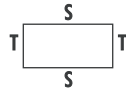
\*Price class for metric inlets  
see price list

# Boxes of polyester, type Rose



## IP65 International Protection DIN 40050

- Housing of glass-fibre reinforced polyester
- Grey RAL 7000
- Temperature resistance of seal:
  - 40° C to + 100° C
- Captive cover screws of stainless steel
- Grooves for fastening screws outside the tight housing (box without external fixing lug)
- Bore scheme according to request
- Other housing dimensions and special sealings available on request



## Article numbers

inlets cut into sides of housing  
casings available with inlets M16, M20, M25, M32 or M40

empty box, without inlet

49154

box without inlet, with mounting rail according to EN 60715 TH15-5.5

49154/15



## Technical data

Metric inlets on each side of casing

S

T

Price class\*

Packing unit

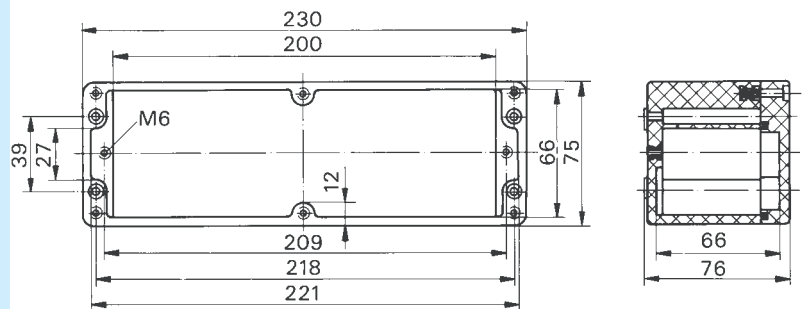
pcs

max. 2 x M40

max. 1 x M25

I

1



## Accessories

Terminal sets  
complete, for  
mounting



37 x 2.5mm<sup>2</sup>

80457

installation height

31 mm

Mounting rail EN 60715 TH 15-5.5

with fastening holes

with bare earthing terminal

Terminals 2.5mm<sup>2</sup>

End barrier

Stopper

1 x 2721

36 x 2760

1 x 2764

1 x 2754

Burning behaviour according to UL 94

Toxicity

Resistance to atmospheric conditions

Insulation according to VDE 0100

Impact resistance according to DIN 50014

Water absorption according to ASTM D 570

V0 (self-extinguishing)

halogen-free

insensitive to UV

completely insulated

> 7Nm

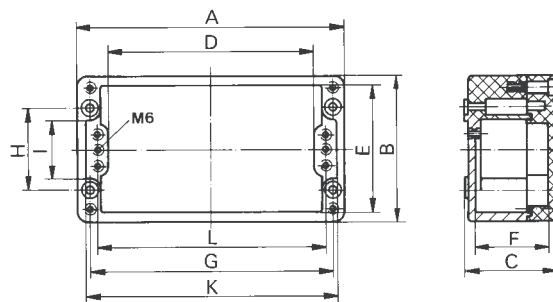
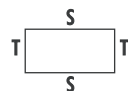
max. 0.7%

\*Price class for metric inlets  
see price list



## IP65 International Protection DIN 40050

- housing of glass-fibre reinforced polyester
- grey RAL 7000
- Temperature resistance of seal: - 40° C to + 100° C
- Captive cover screws of stainless steel
- Grooves for fastening screws outside the tight housing (box without external fixing lug)
- Bore scheme according to request
- Other housing dimensions and special sealings available on request



## Article numbers

	inlets cut into sides of housing housing available with inlets M16, M20, M25, M32 or M40		
empty box, without inlet	49155		49156
box without inlet, with mounting rail according to EN 60715 TH35-7.5	49155/35		49156/35



## Technical data

External dimensions A x B x C	mm	122 x 120 x 91	220 x 120 x 91
Internal dimensions D x E x F	mm	82 x 111 x 81.5	180 x 111 x 81.5
G	mm	106	204
H	mm	82	82
Bores Ø	mm	4.3	6.5
I	mm	66	66
K	mm	113	211
L	mm	95	193
Metric inlets on each side of casing			
S		max. 1 x M40	max. 3 x M40
T		max. 1 x M40	max. 1 x M40
Price class*		I	II
Packing unit	pcs	1	1



## Accessories

Burning behaviour according to UL 94  
Toxicity  
Resistance to atmospheric conditions  
Insulation according to VDE 0100  
Impact resistance according to DIN 50014  
Water absorption according to ASTM D 570

V0 (self-extinguishing)  
halogen-free  
insensitive to UV  
completely insulated  
> 7Nm  
max. 0.7%

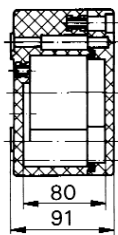
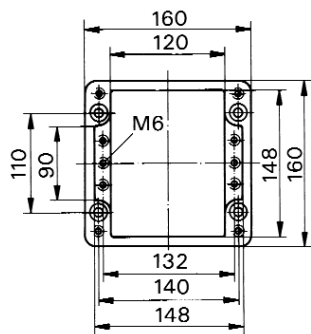
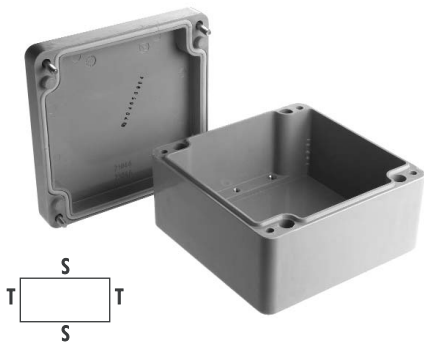
V0 (self-extinguishing)  
halogen-free  
insensitive to UV  
completely insulated  
> 7Nm  
max. 0.7%

\*Price class for metric inlets  
see price list

# Boxes of polyester, type Rose



- IP65 International Protection DIN 40050**
- Housing of glass-fibre reinforced polyester
  - Grey RAL 7000
  - Temperature resistance of seal:
    - 40° C to + 100° C
  - Captive cover screws of stainless steel
  - Grooves for fastening screws outside the tight housing (box without external fixing lug)
  - Bore scheme according to request
  - Other housing dimensions and special sealings available on request



## Article numbers

inlets cut into sides of housing  
housing available with inlets M16, M20, M25, M32 or M40

empty box, without inlet

**49157**

box without inlet, with mounting rail  
according to EN 60715 TH35-7.5

**49157/35**



## Technical data

Metric inlets on each side of casing

S

T

Price class\*

max. 2 x M40  
max. 1 x M40  
III

Packing unit

pcs

1



## Accessories

Burning behaviour according to UL 94

Toxicity

Resistance to atmospheric conditions

Insulation according to VDE 0100

Impact resistance according to DIN 50014

Water absorption according to ASTM D 570

V0 (self-extinguishing)  
halogen-free  
insensitive to UV  
completely insulated  
> 7Nm  
max. 0.7%

\*Price class for metric inlets  
see price list

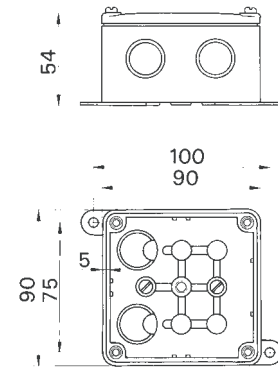
# Junction boxes of thermosetting material, grey, 90x90x54mm up to 7 x 2.5 mm<sup>2</sup>, for screwed cable glands or cable entries



## IP54 International Protection DIN 40050

- With two slewable fixing lugs
- For connection rings of steatite, of the range 2505..., with one-screw terminals with clamping ring, of nickel-plated brass
- Earthing terminal protected against working loose

3150



## Article numbers

### Ratings

empty, without connection ring

with connection ring 7x2.5 mm<sup>2</sup>  
16A, 6 P + PE

With 7 pre-scored inlets, Ø 23 mm

500V

3150

3150/7X2.5



## Technical data

External dimensions	mm	90 x 90 x 54
Internal dimensions	mm	80 x 80 x 40
Fastening hole Ø	mm	6
Packing unit		
3150	pcs	10
3150/7X2.5	pcs	5



## Accessories

for inserting into inlet 23mm Ø

**Screwed cable gland** of plastic, light grey

for cables of 8.5-14.0 mm outside Ø  
with quadratic press-in nut,  
nickel-plated brass

**Cable entry** of thermoplastic, grey, Ø  
5-18 mm

49870

3069



Burning behaviour according to UL 94  
Toxicity  
Impact-resistance according to DIN 53453  
Water absorption according to DIN 53495,  
process 3  
Heat resistance according to ISO 75

V0 (self-extinguishing)  
free of halogen and heavy metal  
7-9 kJ/m<sup>2</sup>

< 0.4%  
160-180°C

# Junction boxes of thermosetting material, grey, 120x120x68mm

up to 5 x 10 mm<sup>2</sup>, for screwed cable glands or cable entries



**IP54 International Protection DIN 40050**

- With two slewable fixing lugs
- For two-screw branching terminals series 30840..., 5x10 mm<sup>2</sup>



3190



## Article numbers

### Ratings

empty, without rail, without terminals  
empty, with mounting rail according to EN 60715 TH 35 without terminals  
with terminals 5x6mm<sup>2</sup>, 41A  
3P+N+PE Art.No. 30841  
with terminals 5x10mm<sup>2</sup>, 57A  
3P+N+PE Art.No. 30842

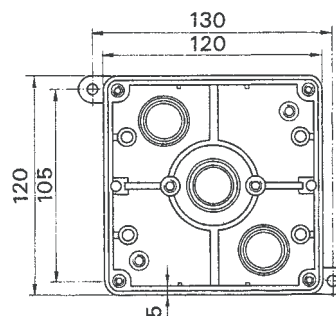
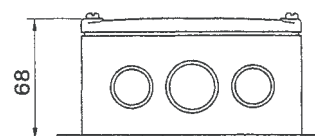
With 6 pre-scored inlets Ø 29 mm  
and 4 pre-scored inlets Ø 23 mm  
500V

3190

3190/35

3190/5X6

3190/5X10



## Technical data

External dimensions	mm	120 x 120 x 68
Internal dimensions	mm	110 x 110 x 50
Fastening hole Ø	mm	6
Length of rail L	mm	90
Distance between holes Ld	mm	46
Packing unit	pcs	6



## Accessories

for inserting into inlet 29mm Ø  
**Screwed cable gland** of plastic, light grey, for cables of 11.0-18.0 mm outside Ø, with hexagonal press-in nut, nickel-plated brass

49871

**Cable entry of thermoplastic**, light grey, Ø 9-24 mm

3078

for inserting into inlet 23mm Ø  
**Screwed cable gland** of plastic, light grey, for cables of 8.5-14.0 mm outside Ø, with quadratic press-in nut, nickel-plated brass

49870

**Cable entry of thermoplastic**, light grey, Ø 5-18 mm

3069



Burning behaviour according to UL 94  
Toxicity

Impact resistance according to DIN 53453

Water absorption according to DIN 53495,  
process 3

Heat resistance according to ISO 75

V0 (self-extinguishing)  
free of halogen and heavy metal  
7-9 kJ/m<sup>2</sup>

< 0.4%  
160-180°C



# Junction boxes of thermosetting material, grey, 180x130x80mm up to 5 x 35 mm<sup>2</sup>, for screwed cable glands or cable entries



## IP54 International Protection DIN 40050

- With two slewable fixing lugs
- For two-screw branching terminals series 30840..., 5x35 mm<sup>2</sup>



3195



## Article numbers

### Ratings

empty, without rail, without terminals  
empty, with mounting rail according to EN 60715 TH 35, without terminals  
with terminals 5x16mm<sup>2</sup>, 63A  
3P+N+PE Art.No. 30843  
with terminals 5x35mm<sup>2</sup>, 100A  
3P+N+PE Art.No. 30844

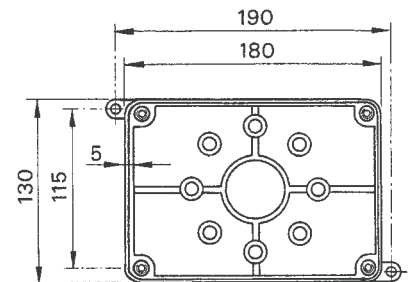
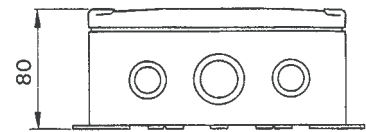
With 4 pre-scored inlets Ø 38 mm  
and 6 pre-scored inlets Ø 29 mm  
500V

3195

3195/35

3195/5X16

3195/5X35



## Technical data

External dimensions	mm	180 x 130 x 80
Internal dimensions	mm	170 x 120 x 58
Fastening holes Ø	mm	6
Length of rail L	mm	115
Distance between holes Ld	mm	100
Packing unit	pcs	4



## Accessories

for inserting into inlet 38mm Ø

**Screwed cable gland** of plastic, light grey, for cables of 17.0-25.0 mm outside Ø, with hexagonal press-in nut, nickel-plated brass

49872

**Cable entry of thermoplastic**, light grey, Ø 9-32 mm

3079

for inserting into inlet 29mm Ø

**Screwed cable gland** of plastic, light grey, for cables of 11.0-18.0 mm outside Ø, with hexagonal press-in nut, nickel-plated brass

49871

**Cable entry of thermoplastic**, light grey, Ø 9-24 mm

3078



Burning behaviour according to UL 94

Toxicity

Impact resistance according to DIN 53453

Water absorption according to DIN 53495, process 3

Heat resistance according to ISO 75

V0 (self-extinguishing)  
free of halogen and heavy metal  
7-9 kJ/m<sup>2</sup>

< 0.4%

160-180°C



