

# MODULAR DISTRIBUTION ENCLOSURES



## MAIN TECHNICAL FEATURES

Material: shock resistant halogen free UV-resistant technopolymer on ABS base.

Standard colours: grey RAL 7035, white RAL 9001, black.


Shock resistance: IK 08 (up to 6 j).

Resistance to abnormal heat (Glow Wire Test): up to 650° C.

Installation temperature for wall mounting enclosures: min. -5° C, max +60° C.

Installation temperature for flush mounting enclosures: min. -15° C, max +60° C.

Operating temperature range: min. -25° C, max +60° C.

Complete with screw caps to gain double insulation. 

Door can be open at 180° and removed, reversible and symmetric front.

Suitable for 53-68 mm high modules and brass terminal blocks.

Included: galvanized steel DIN rail EN 50022 already assembled, blank plastic plate for unused modules, self-adhesive circuit label.

Reference Standard: IEC 60670-1/24, CEI 23-48, CEI 23-49 - V1/2000 - V2/2003.

Products complying with the main requirements of the regulation B.T. 2006/96/CE.

Products complying with the regulation RoHS 2002/95/CE.



IP40 Wall mounting  
modular enclosures Series 600  
grey RAL 7035  
page 216



IP40 Wall mounting  
modular enclosures Series 600  
white RAL 9001  
page 217



IP40 Wall mounting  
modular enclosures without  
door Series 610  
page 219



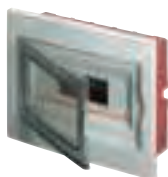
IP40 Wall mounting  
modular enclosures without  
door Series 610  
page 220



IP65 Wall mounting  
watertight modular  
enclosures Series 620  
page 226



IP65/IP55 emergency  
modular enclosures  
64 Series  
page 228



IP40 flush mounting  
modular enclosures Series 630  
grey RAL 7035  
page 234



IP40 flush mounting  
modular enclosures Series 630  
white RAL 9001  
page 235



IP40 flush mounting  
modular enclosures – solid  
door – Series 630 – white RAL  
9001  
page 236



IP40 flush mounting  
modular enclosures  
Series 630 – black RAL 7021  
page 237

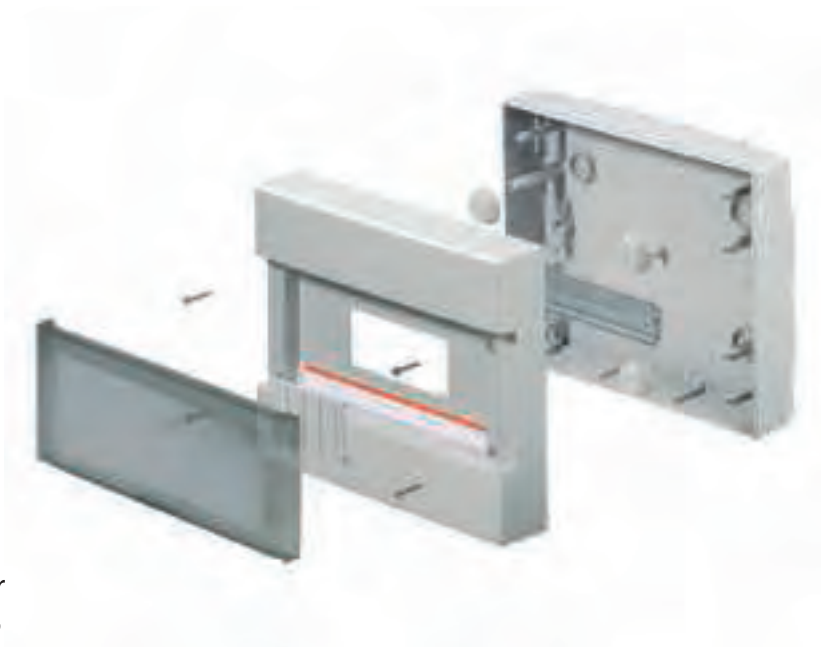
## TECHNICAL SPECIFICATION

Possibility to mount 53-68 mm high modules

Reversible removable transparent door, as well as the front

Kits of brass terminals specific for every model, easy to install

Self-adhesive circuit labels



Modular blank plate and screw caps to gain double insulation

Suitable for cover sealing by proper screws

Cable inlet through IP55 plastic stepped glands, IP44/IP66 conduit fittings and IP68 cable glands

Our modular enclosures form a wide range perfectly complying with the protection and control needs of the modern distribution electrical systems.

The enclosures can be installed very easily and quickly thanks to the accessories supplied with the box or available as fittings.

Perfectly symmetric enclosure base: there isn't any top or bottom to pay attention to during the installation.

The top, the bottom and the sides are fully plain, without any pre-cuttings. That is a clear advantage because the stepped glands, the conduit fittings and the cable glands, used to join the enclosure, can be placed in any position, making the installation quicker.

The high mechanical strength protects the wiring devices and equipments in the outdoor installations, in industrial and domestic applications.

The modular enclosures with the door are available in 2 different colours: grey RAL 7035 and white RAL 9001, the same colours as the trunkings, so that it is possible to carry out complete distribution electrical systems with all the components in the same colour. The modular enclosures with or without the door are the ideal solution for the different distribution areas in offices and houses.

## TECHNICAL SPECIFICATION

The wall mounting modular enclosures are characterized by a special profile to hide the fixing screws

The enclosure cover can be locked and unlocked by a simple rotation

EC-brand name and the item code are moulded in the bottom in the same colour as the enclosure



The screw seats to fix the cover to the bottom are hidden by a side frame

The modular enclosures is fully symmetric, has a harmonious outlook and perfectly fit in with any environment



Every modular enclosure is suitable for housing the brass terminal blocks

Elettrocanali modular enclosures have an undoubted advantage: they combine a big inner volume with limited outer dimensions, and a simple linear design fitting in with any environment. The enclosure base is deep enough to grant the conduit inlet up to 40mm diameter by different

joints; at the same time it permits the installer to carry out the cabling works without any difficulty, because the columns for the fixing of the cover and the brass terminal holders are placed along the sides. The cover is symmetric, the door can therefore be hinged either on

the right or on the left, with an opening radius bigger than 180°C. The wall mounting enclosures are equipped with screw head caps to gain double insulation, so that they are suitable for an installation with complete insulation according to the Standard IEC 60670-1/24.




## mounting examples





## WALL MOUNTING ENCLOSURES SERIES 600

### MAIN TECHNICAL FEATURES:

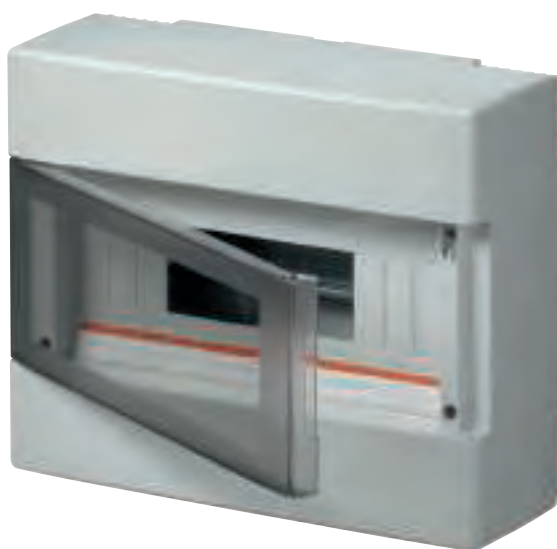
- Reversible door made of smoky grey polycarbonate.
- Enclosure suitable for housing the terminal blocks.
- Enclosure suitable for cover sealing.
- Galvanized steel DIN rail EN 50022 already assembled.
- Blank plastic plate for unused modules..
- Self-adhesive label for circuit identification.
- Screw caps to gain double insulation. 



**IP 40**



ITEM	EXTERNAL DIMENSIONS W x H x D mm	MODULE NUMBER (17,5 mm)	DISSIPATED POWER (Watt) CEI 23-49	PACKAGING PIECES
<b>EC60004</b>	150x170x100	4	11	1/22
<b>EC60008</b>	200x180x100	8	14	1/15
<b>EC60012</b>	280x220x100	12	21	1/8
<b>EC60024</b>	280x350x100	24 (2x12)	30	1/5
<b>EC60036</b>	400x400x130	36 (2x18)	47	1/4
<b>EC60054</b>	400x600x130	54 (3x18)	72	-/1



**EC60004**



**EC60008**



**EC60012**



**EC60024**



**EC60036**




**EC60054**



## WALL MOUNTING ENCLOSURES SERIES 600

### MAIN TECHNICAL FEATURES:

- Reversible door made of smoky grey polycarbonate.
- Enclosure suitable for housing the terminal blocks.
- Enclosure suitable for cover sealing.
- Galvanized steel DIN rail EN 50022 already assembled.
- Blank plastic plate for unused modules.
- Self-adhesive label for circuit identification.
- Screw caps to gain double insulation. 



**IP 40**



ITEM	EXTERNAL DIMENSIONS W x H x D mm	MODULE NUMBER (17,5 mm)	DISSIPATED POWER (Watt) CEI 23-49	PACKAGING PIECES
<b>EC60004B</b>	150x170x100	4	11	1/22
<b>EC60008B</b>	200x180x100	8	14	1/15
<b>EC60012B</b>	280x220x100	12	21	1/8
<b>EC60024B</b>	280x350x100	24 (2x12)	30	1/5
<b>EC60036B</b>	400x400x130	36 (2x18)	47	1/4
<b>EC60054B</b>	400x600x130	54 (3x18)	72	-/1



**EC60004B**



**EC60008B**



**EC60012B**



**EC60024B**



**EC60036B**



**EC60054B**



## ■ INSTALLATION KIT FOR WALL MOUNTING ENCLOSURES **SERIES 600**










### MAIN TECHNICAL FEATURES:

- Installation kit for enclosures series 600/610.
- Plastic support, brass terminal block and relevant fixing screws included.
- Quantities per packaging are the same as the enclosures, for an easy management of the accessories.

## ■ Installation kit for wall mounting modular enclosures

ITEM	FOR ENCLOSURES	INSTALLATION KIT SUPPORTS	INSTALLATION KIT TERMINAL BLOCKS/HOLES	PACKAGING PIECES
<b>EC6004EQ</b>	4 modules	1	1x5	1/22
<b>EC6008EQ</b>	8 modules	1	1x9	1/15
<b>EC6012EQ</b>	12 modules	1	1x13	1/8
<b>EC6024EQ</b>	24 modules	1	2x13	1/5
<b>EC6036EQ</b>	36 modules	2	3x13	1/4
<b>EC6054EQ</b>	54 modules	2	4x13	-/1

## ■ Insulated brass terminal blocks to be set on DIN RAIL EN 50022

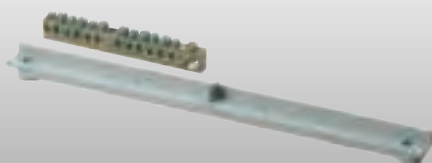
ITEM	HOLES AND SECTION mm <sup>2</sup>	COLOUR	PACKAGING PIECES
<b>EC890050</b>	Section 1x35 - 6x16		10/340
<b>EC890051</b>	Section 1x35 - 1x25 - 10x16		10/320
<b>EC890052</b>	Section 1x35 - 2x25 - 12x16		10/240
<b>EC890053</b>	Section 1x35 - 6x16		10/340
<b>EC890054</b>	Section 1x35 - 1x25 - 10x16		10/320
<b>EC890055</b>	Section 1x35 - 2x25 - 12x16		10/240
<b>EC890056</b>	Section 1x35 - 6x16		10/340
<b>EC890057</b>	Section 1x35 - 1x25 - 10x16		10/320
<b>EC890058</b>	Section 1x35 - 2x25 - 12x16		10/240

## ■ Watertight joints for connection between enclosures and boards

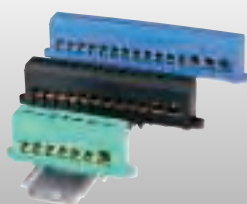
ITEM	TYPE	INTERNAL DIAMETER mm	HOLE DIAMETER mm	NUT DIAMETER mm	LENGTH mm	PACKAGING PIECES
<b>EC52121</b>	PG21	21,6	29	38	23	10/50
<b>EC52129</b>	PG29	27,7	37,5	44,2	23	10/50
<b>EC52136</b>	PG36	34,9	47,5	52,6	24,5	10/50

## ■ Blank plates for enclosures and boards - 4,5 modules divisible by 0,5 modules

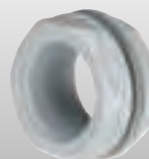
ITEM	DIMENSIONS mm	COLOUR	PACKAGING PIECES
<b>EC600TC</b>	4,5 modules DIN EN 50022 - 52x82	GREY RAL 7035	25
<b>EC600TCB</b>	4,5 modules DIN EN 50022 - 52x82	WHITE RAL 9001	25



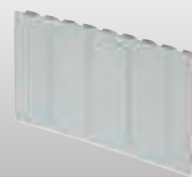
**EC6012EQ**



**EC890**



**EC52129**



**EC600TC**

## WALL MOUNTING MODULAR ENCLOSURES WITHOUT DOOR

### SERIES 610

#### MAIN TECHNICAL FEATURES:

- Pre-cuttings for conduit inlet or cable glands.
- Galvanized steel DIN rail EN 50022.

**IP 40**



GREY RAL 7035

ITEM	EXTERNAL DIMENSIONS W x H x D mm	MODULE NUMBER (17,5 mm)	DISSIPATED POWER (Watt) CEI 23-49	PACKAGING PIECES
<b>EC61002</b>	50x130x85	2	5	50
<b>EC61003</b>	90x130x85	4	6	25




**EC61002**



**EC61003**

## WALL MOUNTING MODULAR ENCLOSURES WITHOUT DOOR **SERIES 610**

### MAIN TECHNICAL FEATURES:

- Enclosure suitable for housing the terminal blocks.
- Enclosure suitable for cover sealing.
- Galvanized steel DIN rail EN 50022 already assembled.
- Blank plastic plate for unused modules.
- Self-adhesive label for circuit identification.
- Screw caps to gain double insulation. 



**IP 40**

  
GREY RAL 7035

ITEM	EXTERNAL DIMENSIONS W x H x D mm	MODULE NUMBER (17,5 mm)	DISSIPATED POWER (Watt) CEI 23-49	PACKAGING PIECES
<b>EC61004</b>	150x170x100	4	11	1/22
<b>EC61008</b>	200x180x100	8	15	1/15
<b>EC61012</b>	280x220x100	12	23	1/8
<b>EC61024</b>	280x350x100	24 (2x12)	34	1/5
<b>EC61036</b>	400x400x130	36 (2x18)	58	1/4
<b>EC61054</b>	400x600x130	54 (3x18)	79	-/1



**EC61004**



**EC61008**



**EC61012**



**EC61024**



**EC61036**



**EC61054**

## ■ INSTALLATION KIT FOR MODULAR ENCLOSURES **SERIES 610**

### MAIN TECHNICAL FEATURES:

- Installation kit for enclosures series 600/610.
- Plastic support, brass terminal block and relevant fixing screws included.
- Quantities per packaging are the same as the enclosures, for an easy management of the accessories.

## ■ Installation kit for wall mounting modular enclosures

ITEM	FOR ENCLOSURES	INSTALLATION KIT SUPPORTS	INSTALLATION KIT TERMINAL BLOCKS / HOLES	PACKAGING PIECES
<b>EC6004EQ</b>	4 modules	1	1x5	1/22
<b>EC6008EQ</b>	8 modules	1	1x9	1/15
<b>EC6012EQ</b>	12 modules	1	1x13	1/8
<b>EC6024EQ</b>	24 modules	1	2x13	1/5
<b>EC6036EQ</b>	36 modules	2	3x13	1/4
<b>EC6054EQ</b>	54 modules	2	4x13	-/1

## ■ Terminal blocks with support for DIN EN 50022 rail

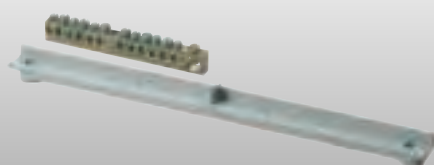
ITEM	HOLES AND SECTION mm <sup>2</sup>	COLOUR	PACKAGING PIECES
<b>EC890050</b>	Section 1x35 - 6x16		10/340
<b>EC890051</b>	Section 1x35 - 1x25 - 10x16		10/320
<b>EC890052</b>	Section 1x35 - 2x25 - 12x16		10/240
<b>EC890053</b>	Section 1x35 - 6x16		10/340
<b>EC890054</b>	Section 1x35 - 1x25 - 10x16		10/320
<b>EC890055</b>	Section 1x35 - 2x25 - 12x16		10/240
<b>EC890056</b>	Section 1x35 - 6x16		10/340
<b>EC890057</b>	Section 1x35 - 1x25 - 10x16		10/320
<b>EC890058</b>	Section 1x35 - 2x25 - 12x16		10/240

## ■ Watertight Joints for connection between enclosures and boards

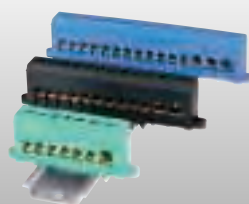
ITEM	TYPE	INTERNAL DIAMETER mm	HOLE DIAMETER mm	NUT DIAMETER mm	LENGTH mm	PACKAGING PIECES
<b>EC52121</b>	PG21	21,6	29	38	23	10/50
<b>EC52129</b>	PG29	27,7	37,5	44,2	23	10/50
<b>EC52136</b>	PG36	34,9	47,5	52,6	24,5	10/50

## ■ Blank plates for enclosures and boards - 4,5 modules divisible by 0,5 modules

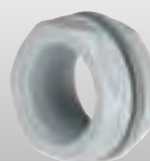
ITEM	DIMENSIONS mm	COLOUR	PACKAGING PIECES
<b>EC600TC</b>	4,5 modules DIN EN 50022 - 52x82	GREY RAL 7035	25



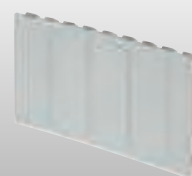
**EC6012EQ**



**EC890**



**EC52129**



**EC600TC**



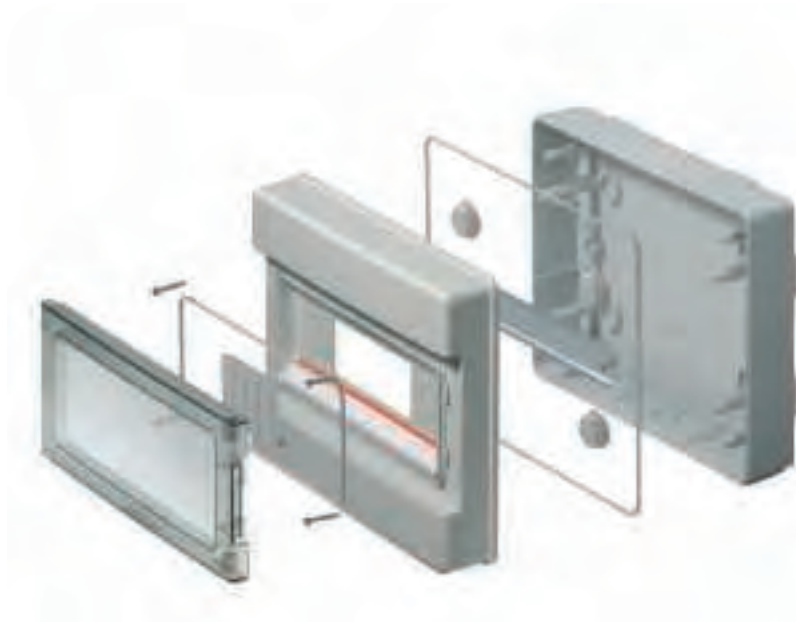
## TECHNICAL SPECIFICATION

Possibility to mount 53-68 mm high modules

Reversible front

Kits of brass terminals specific for every model, easy to install

Self-adhesive circuit labels



Modular blank plate and screw caps to gain double insulation

Internal pre-cuttings for conduit joints inside the enclosures

Cable inlet through IP55 plastic stepped glands, IP44/IP66 conduit fittings and IP68 cable glands

The family of sealed modular enclosures series 620 with protection degree IP65 perfectly meets the protection and control needs of the modern distribution electrical systems in different environments, especially if wet or exposed to inclemency of the weather, to dust and pollution. In short they are suitable for any outdoor installation. The high-quality halogen free

technopolymer assures a great resistance to aging caused by the atmospheric agents and UV-rays. Thanks to the perfectly symmetric bottom and front the door can be reversed and opened at 180°. Starting from the 24-module enclosures the door has got a triangle safety key which permits to close the door and lock it. The cover fixing screws are made up of high-resistant stainless steel

and, once inserted in their seats, they can't fall off. The pre-cuttings for the cable inlet are placed inside the modular enclosure, so that the outer side is completely smooth, which permits to join the enclosures side by side and, moreover, to put the stepped glands, the conduit fittings and the cable glands, used to connect the enclosure, in any position.

## TECHNICAL SPECIFICATION

EC-brand name and the item code are moulded in the bottom in the same colour as the enclosure

The 2 doors of the 72-module enclosure allow to operate directly on the equipments to set in action

Starting from the 24-module enclosures the door has got a triangle safety key

The top, the bottom and the sides are fully plain, without any pre-cuttings. That permits to join several enclosures side by side



The asymmetric modular windows of the 72-module enclosure allow to modify the distance between the DIN rails

Suitable for cover sealing by proper screws

The 72-module enclosures have 18-module modular windows, which can be replaced by closed windows to carry our connecting brass terminals or small automations

The series of sealed modular enclosures has combined the need to gain a big inner volume, necessary to correctly dissipate the power generated by the installed equipments and to rightly manage the cabling, with a linear functional outlook fitting in with any environment.

The 72-module sealed enclosure has 18-module asymmetric modular windows, permitting to modify the distance between the

DIN rails, simply by turning the windows upside down and adjusting the distance on 3 different positions: 150-175-200mm.

In the same way it is possible to fix the DIN rails on the bottom in different places which must however correspond to the ones chosen for the cover or vice versa. The bottom back of the 72-module enclosure is suitable for the back plate EC450P8 (285x205).

For the inlet of pliable, rigid and flexible spiral conduits we recommend using our fitting systems with IP65 or IP67 protection degree.

The wall mounting enclosures are equipped with screw head caps to gain double insulation, so that they are suitable for an installation with complete insulation according to the Standard IEC 60670-1/24.

## mounting examples










## WALL MOUNTING WATERTIGHT MODULAR ENCLOSURES **SERIES 620**

### MAIN TECHNICAL FEATURES:

- Door made up of smoky grey polycarbonate.
- Enclosure suitable for housing the terminal blocks.
- Internal pre-cuttings for conduit inlet or cable glands.
- Galvanized steel DIN 50022 rail already assembled.
- Blank plastic plate for unused modules.
- Self-adhesive label for circuit identification.
- Screw caps to gain double insulation. 

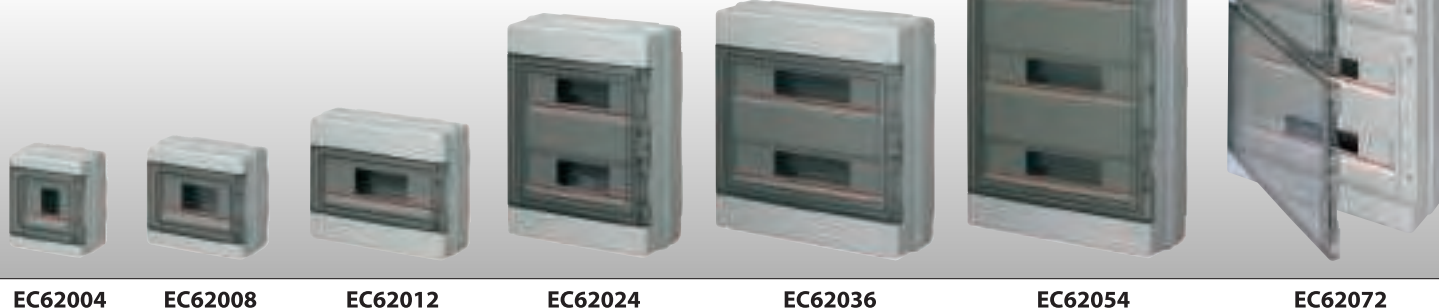
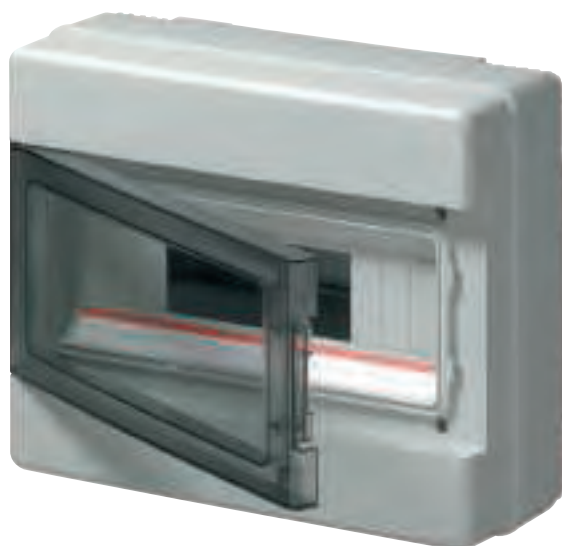


**IP 65**

  
GREY RAL 7035

ITEM	EXTERNAL DIMENSIONS W x H x D mm	MODULE NUMBER (17,5 mm)	DISSIPATED POWER (Watt) CEI 23-49	PACKAGING PIECES
<b>EC62004</b>	150x170x100	4	10	1/22
<b>EC62008</b>	200x180x100	8	12	1/14
<b>EC62012</b>	280x220x100	12	18	1/8
<b>EC62024*</b>	290x390x140	24 (2x12)	27	1/4
<b>EC62036*</b>	400x400x140	36 (2x18)	43	1/4
<b>EC62054*</b>	400x600x140	54 (3x18)	62	-/1
<b>EC62072*</b>	420x885x150	72 (4x18)	85	-/1

\* Door with double handle and safety closure



EC62004

EC62008

EC62012

EC62024

EC62036

EC62054

EC62072

## INSTALLATION KIT FOR WATERTIGHT MODULAR ENCLOSURES **SERIES 620**

### MAIN TECHNICAL FEATURES:

- Installation kit for enclosures series 620.
- Plastic support, brass terminal block and relevant fixing screws included.
- Quantities per packaging are the same as the enclosures, for an easy management of the accessories.









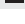
## Installation kit for watertight modular enclosures

ITEM	FOR ENCLOSURES	INSTALLATION KIT SUPPORTS	INSTALLATION KIT TERMINAL BLOCKS / HOLES	PACKAGING PIECES
<b>EC6204EQ</b>	4 modules	1	1x5	1/22
<b>EC6208EQ</b>	8 modules	1	1x9	1/14
<b>EC6212EQ</b>	12 modules	1	1x13	1/8
<b>EC6224EQ</b>	24 modules	1	2x13	1/4
<b>EC6236EQ</b>	36 modules	2	3x13	1/4
<b>EC6254EQ</b>	54/72 modules	2	4x13	-/1

## Blank plate for 72-module enclosure

<b>EC67018</b>	Blank plate for 18-module window of the 72-module enclosure	1/10
----------------	---	------

## Terminal blocks with support for DIN EN 50022 rail

ITEM	HOLES AND SECTION mm <sup>2</sup>	COLOUR	PACKAGING PIECES
<b>EC890050</b>	Section 1x35 - 6x16		10/340
<b>EC890051</b>	Section 1x35 - 1x25 - 10x16		10/320
<b>EC890052</b>	Section 1x35 - 2x25 - 12x16		10/240
<b>EC890053</b>	Section 1x35 - 6x16		10/340
<b>EC890054</b>	Section 1x35 - 1x25 - 10x16		10/320
<b>EC890055</b>	Section 1x35 - 2x25 - 12x16		10/240
<b>EC890056</b>	Section 1x35 - 6x16		10/340
<b>EC890057</b>	Section 1x35 - 1x25 - 10x16		10/320
<b>EC890058</b>	Section 1x35 - 2x25 - 12x16		10/240

## Watertight Joints for connection between enclosures and boards

ITEM	TYPE	INTERNAL DIAMETER mm	HOLE DIAMETER mm	NUT DIAMETER mm	LENGTH mm	PACKAGING PIECES
<b>EC52121</b>	PG21	21,6	29	38	23	10/50
<b>EC52129</b>	PG29	27,7	37,5	44,2	23	10/50
<b>EC52136</b>	PG36	34,9	47,5	52,6	24,5	10/50

## Blank plates for enclosures and boards - 4,5 modules divisible by 0,5 modules

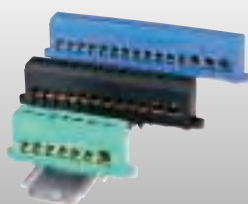
ITEM	DIMENSIONS mm	COLOUR	PACKAGING PIECES
<b>EC600TC</b>	4,5 modules DIN EN 50022 - 52x82	GREY RAL 7035	25
<b>EC600TCR</b>	4,5 modules DIN EN 50022 - 52x82	RED RAL 3000	25



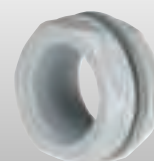
EC6212EQ



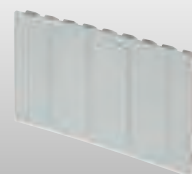
EC67018



EC890



EC52129



EC600TC

## WALL MOUNTING WATERTIGHT EMERGENCY MODULAR ENCLOSURES SERIES 64

### MAIN TECHNICAL FEATURES:

- Safety key for door closing.
- Breakable safety glass.
- Galvanized steel DIN rail EN 50022 already assembled in the bottom.
- Self-adhesive label for circuit identification.
- Screw caps to gain double insulation.
- Available colours : grey RAL 7035 and red RAL 3000.

CE

GREY RAL 7035

IP 65

RED RAL 3000

ITEM	EXTERNAL DIMENSIONS W x H x D mm	COLOUR	MODULE NUMBER (17,5 mm)	DISSIPATED POWER (Watt) CEI 23-49	PACKAGING PIECES
<b>EC64004</b>	150x170x100	RED	4	10	1/22
<b>EC64008</b>	200x180x100	RED	8	12	1/14
<b>EC64104</b>	150x170x100	GREY	4	10	1/22
<b>EC64108</b>	200x180x100	GREY	8	12	1/14



EC64004



EC64008



EC64104



EC64108

## EMERGENCY – CALL POINT SERIES 64

### MAIN TECHNICAL FEATURES:

- Board with breakable glass for emergency, flush mounting or wall mounting on a 3 module box.
- Suitable for two different settings: automatic (at glass breaking ) or manual (after glass breaking).
- Contacts: 1NA+1NC - 10A - 250V~.
- Indicator of location and integrity (not on duty).
- Shock resistance: IK08 (up to 5 j).



**IP 55**

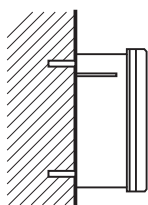
RED RAL 3000

## Emergency - Call point

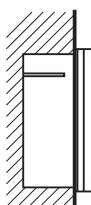
ITEM	EXTERNAL DIMENSIONS W x H x D mm	CONTACT NUMBER	PACKAGING PIECES
<b>EC64202</b>	110x110x57	1NA + 1NC	1

## Hammer with safety chain - Spare glasses

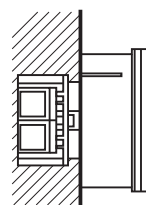
ITEM	DESCRIPTION	FOR ITEM	PACKAGING PIECES
<b>EC64400</b>	Stainless steel glass hammer with safety chain	EC64004/EC64104/EC64008 EC64108/EC64202	1
<b>EC64401</b>	Spare glass for 4 module enclosure	EC64004/EC64104	10
<b>EC64402</b>	Spare glass for 8 module enclosure	EC64008/EC64108	10
<b>EC64403</b>	Spare glass for call point	EC64202	10



IP55 Wall mounting enclosure



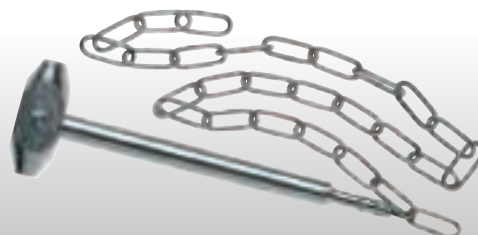
IP55 Flush mounting enclosure



IP40 Wall mounting enclosure  
on flush mounting box



**EC64202**



**EC64400**



## TECHNICAL SPECIFICATION

Possibility to mount 53-68 mm high modules

The transparent door is removable, and the front is reversible

Kits of brass terminals specific for every model, easy to install



Strong enclosure structure with stiffening outer ring

Cover for unused modules included

Cable inlet by corrugated conduits up to 40 mm

The supports of the DIN-rails permit to compensate for the variable thickness of the plaster in order to align the devices at the correct depth

Self-adhesive circuit labels

The range of flush mounting modular enclosures is wide and complete: it comprises enclosures from 4 up to 72 modules available in different colours, such as grey, black, white with transparent smoky grey and white with solid door. They are suitable both for the industrial applications and for the domestic and public environments, in which the domotics plays a very important role nowadays.

The enclosures, made up of orange polystyrene, have a high mechanical strength, so that they don't get deformed during the installation; besides, they are characterized by pre-cuttings for the conduit inlet up to 40 mm. Both the bottom and the front are perfectly symmetric, so that there is no top or bottom to pay attention to during the installation. The reversible front permits to

open the door at more than 180° either right or left. The stainless steel DIN rail EN50022 can be horizontally adjusted to perfectly line up the equipments and devices. The support rails are so designed to compensate for the variable thickness of the plaster in order to align the devices at the correct depth.

## TECHNICAL SPECIFICATION

EC-brand name and the item code are moulded in the bottom in the same colour as the enclosure

The 2 doors of the 72-module enclosure allow to operate directly on the equipments to set in action

Starting from the 54-module enclosures the door has got a triangle safety key

Starting from the 24-module enclosures the DIN rails are put on a removable frame



The asymmetric modular windows of the 72-module enclosure allow to modify the distance between the DIN rails

Suitable for the sealing of the single 18-module windows

The 72-module enclosures have 18-module modular windows, which can be replaced by closed windows to carry our connecting brass terminals or small automations

The 72-module flush mounting enclosure has 18-module asymmetric modular windows, permitting to modify the distance between the DIN rails, simply by turning the windows upside down and adjusting the distance on 3 different positions: 150-175-200 mm.

In the same way it is possible to fix the DIN rails on the bottom in different places which must

however correspond to the ones chosen for the cover or vice versa. The inner room is therefore adjusted according to the installed devices and the necessary cabling.

The DIN rails, placed on two separate frames, which can be removed to carry out the wiring or the assembling in the workshop, can be singly adjusted on 2 positions in order to house

devices with a different height. The reversible front permits to open the door at more than 180° either right or left.

The wall mounting enclosures are equipped with screw head caps to gain double insulation, so that they are suitable for an installation with complete insulation according to the Standard IEC 60670-1/24.

## mounting examples









## FLUSH MOUNTING MODULAR ENCLOSURES **SERIES 630**

### MAIN TECHNICAL FEATURES:

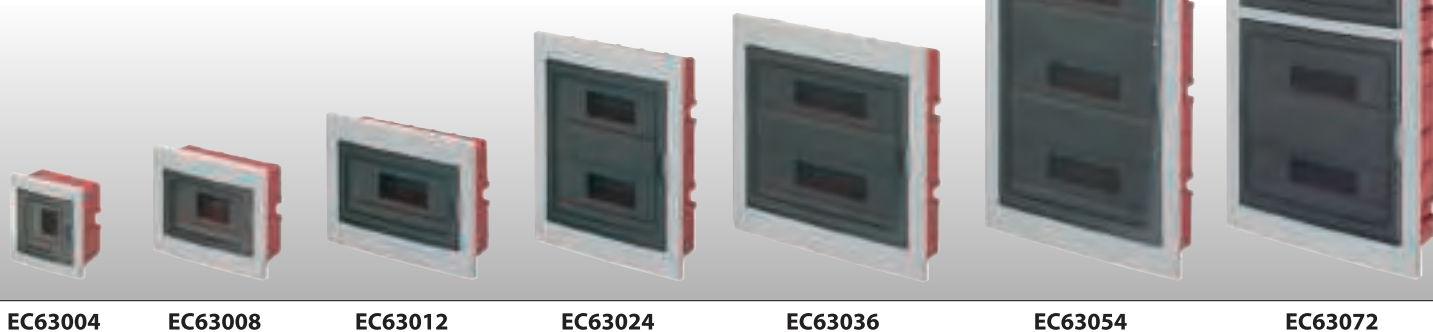
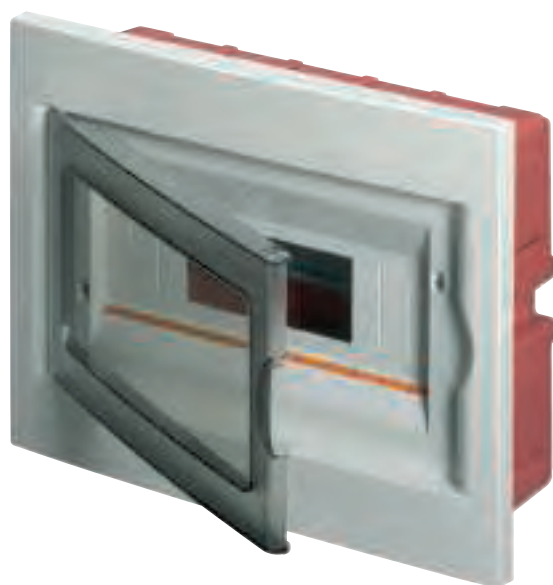
- Reversible door made of smoky grey polycarbonate.
- Box made of shock resistant orange polystyrene.
- External frame and door made of bright material.
- Self-adhesive label for circuit identification.
- Enclosure suitable for housing the terminal blocks.
- Blank plastic plate for unused modules.
- Galvanized steel DIN rail EN 50022, already assembled on removable and adjustable support.
- Single package in cardboard box for a better protection during transport and storage.



**IP 40**

GREY RAL 7035

ITEM	EXTERNAL DIMENSIONS W x H x D mm	MODULE NUMBER (17,5 mm)	DISSIPATED POWER (Watt) CEI 23-49	PACKAGING PIECES
<b>EC63004</b>	154x160x80	4	9	1/20
<b>EC63008</b>	240x194x80	8	18	1/9
<b>EC63012</b>	320x240x80	12	25	1/7
<b>EC63024</b>	320x388x80	24 (2x12)	35	1/5
<b>EC63036</b>	430x410x80	36 (2x18)	52	1/4
<b>EC63054</b>	430x618x80	54 (3x18)	77	1
<b>EC63072</b>	450x853x119	72 (4x18)	90	1



EC63004

EC63008

EC63012

EC63024

EC63036

EC63054

EC63072

## FLUSH MOUNTING MODULAR ENCLOSURES **SERIES 630**

### MAIN TECHNICAL FEATURES:

- Reversible door made of smoky grey polycarbonate.
- Box made of shock resistant orange polystyrene.
- External frame and door made of bright material.
- Self-adhesive label for circuit identification.
- Enclosure suitable for housing the terminal blocks.
- Blank plastic plate for unused modules.
- Galvanized steel DIN rail EN 50022, already assembled on removable and adjustable support.
- Single package in cardboard box for a better protection during transport and storage.



**IP 40**

WHITE RAL 9001

ITEM	EXTERNAL DIMENSIONS W x H x D mm	MODULE NUMBER (17,5 mm)	DISSIPATED POWER (Watt) CEI 23-49	PACKAGING PIECES
<b>EC63004B</b>	154x160x80	4	9	1/20
<b>EC63008B</b>	240x194x80	8	18	1/9
<b>EC63012B</b>	320x240x80	12	25	1/7
<b>EC63024B</b>	320x388x80	24 (2x12)	35	1/5
<b>EC63036B</b>	430x410x80	36 (2x18)	52	1/4
<b>EC63054B</b>	430x618x80	54 (3x18)	77	1
<b>EC63072B</b>	450x853x119	72 (4x18)	90	1



EC63004B

EC63008B

EC63012B

EC63024B

EC63036B

EC63054B

EC63072B

## FLUSH MOUNTING MODULAR ENCLOSURES – SOLID DOOR SERIES 630

### MAIN TECHNICAL FEATURES:

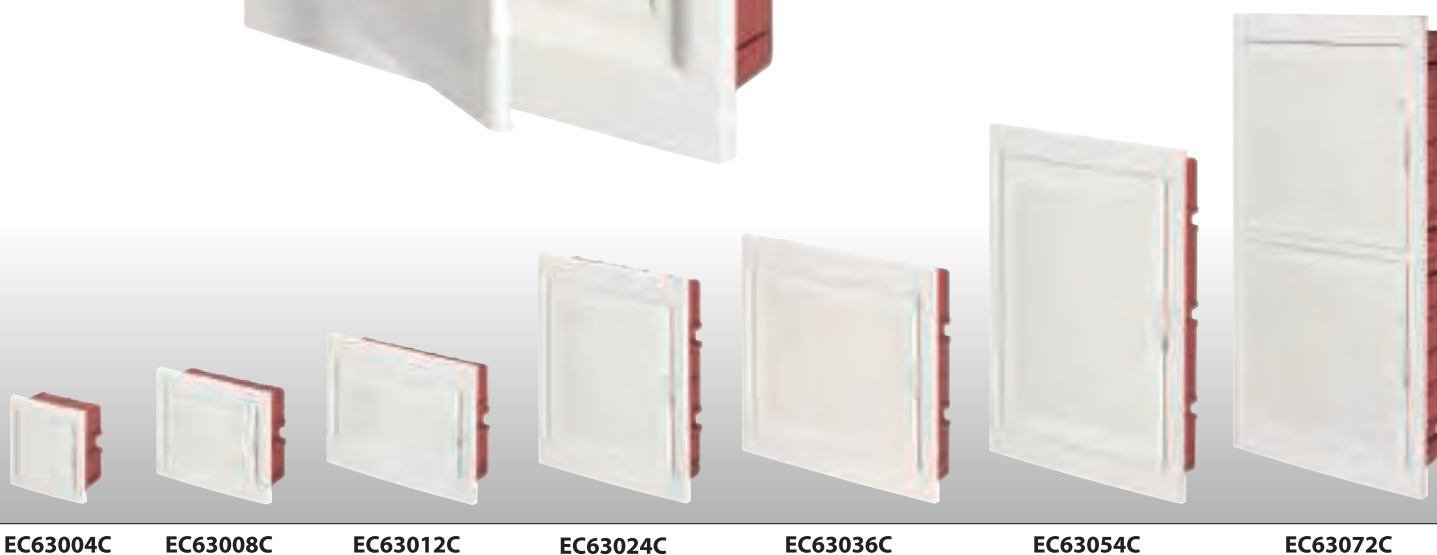
- Door made of white ABS .
- Box made of shock resistant orange polystyrene.
- External frame and door made of bright material.
- Self-adhesive label for circuit identification.
- Enclosure suitable for housing the terminal blocks.
- Blank plastic plate for unused modules.
- Galvanized steel DIN rail EN 50022, already assembled on removable and adjustable support.
- Single package in cardboard box for a better protection during transport and storage.



**IP 40**



ITEM	EXTERNAL DIMENSIONS W x H x D mm	MODULE NUMBER (17,5 mm)	DISSIPATED POWER (Watt) CEI 23-49	PACKAGING PIECES
<b>EC63004C</b>	154x160x80	4	9	1/20
<b>EC63008C</b>	240x194x80	8	18	1/9
<b>EC63012C</b>	320x240x80	12	25	1/7
<b>EC63024C</b>	320x388x80	24 (2x12)	35	1/5
<b>EC63036C</b>	430x410x80	36 (2x18)	52	1/4
<b>EC63054C</b>	430x618x80	54 (3x18)	77	1
<b>EC63072C</b>	450x853x119	72 (4x18)	90	1



EC63004C

EC63008C

EC63012C

EC63024C

EC63036C

EC63054C

EC63072C

## FLUSH MOUNTING MODULAR ENCLOSURES **SERIES 630**

### MAIN TECHNICAL FEATURES:

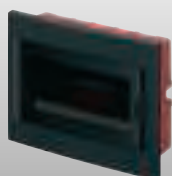
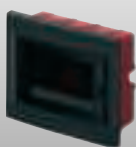
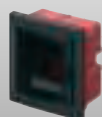
- Reversible door made of smoky grey polycarbonate.
- Box made of shock resistant orange polystyrene.
- External frame and door made of bright material.
- Self-adhesive label for circuit identification.
- Enclosure suitable for housing the terminal blocks.
- Blank plastic plate for unused modules.
- Galvanized steel DIN rail EN 50022, already assembled on removable and adjustable support.
- Single package in cardboard box for a better protection during transport and storage.



**IP 40**

BLACK

ITEM	EXTERNAL DIMENSIONS W x H x D mm	MODULE NUMBER (17,5 mm)	DISSIPATED POWER (Watt) CEI 23-49	PACKAGING PIECES
<b>EC63004N</b>	154x160x80	4	9	1/20
<b>EC63008N</b>	240x194x80	8	18	1/9
<b>EC63012N</b>	320x240x80	12	25	1/7
<b>EC63024N</b>	320x388x80	24 (2x12)	35	1/5
<b>EC63036N</b>	430x410x80	36 (2x18)	52	1/4
<b>EC63054N</b>	430x618x80	54 (3x18)	77	1
<b>EC63072N</b>	450x853x119	72 (4x18)	90	1



**EC63004N**

**EC63008N**

**EC63012N**

**EC63024N**

**EC63036N**

**EC63054N**

**EC63072N**

## INSTALLATION KIT FOR FLUSH MOUNTING MODULAR ENCLOSURES SERIES 630

### MAIN TECHNICAL FEATURES:

- Installation kit for enclosures series 630.
- Plastic support, brass terminal block and relevant fixing screws included.
- Quantities per packaging are the same as the enclosures, for an easy management of the accessories.

## Installation kit for flush mounting modular enclosures

ITEM	FOR ENCLOSURES	INSTALLATION KIT SUPPORTS	INSTALLATION KIT TERMINAL BLOCKS / HOLES	PACKAGING PIECES
<b>EC6304EQ</b>	4 modules	1	1x5	1/20
<b>EC6308EQ</b>	8 modules	1	1x9	1/9
<b>EC6312EQ</b>	12 modules	1	1x13	1/7
<b>EC6324EQ</b>	24 modules	1	2x13	1/5
<b>EC6336EQ</b>	36 modules	2	3x13	1/4
<b>EC6354EQ</b>	54/72 modules	2	4x13	1

## Blank plate for 72-module enclosure

<b>EC67018</b>	Blank plate for 18-module window of the 72-module enclosure	1/10
----------------	---	------

## Terminal blocks with support for DIN EN 50022 rail

ITEM	HOLES AND SECTION mm <sup>2</sup>	COLOUR	PACKAGING PIECES
<b>EC890050</b>	Section 1x35 - 6x16		10/340
<b>EC890051</b>	Section 1x35 - 1x25 - 10x16		10/320
<b>EC890052</b>	Section 1x35 - 2x25 - 12x16		10/240
<b>EC890053</b>	Section 1x35 - 6x16		10/340
<b>EC890054</b>	Section 1x35 - 1x25 - 10x16		10/320
<b>EC890055</b>	Section 1x35 - 2x25 - 12x16		10/240
<b>EC890056</b>	Section 1x35 - 6x16		10/340
<b>EC890057</b>	Section 1x35 - 1x25 - 10x16		10/320
<b>EC890058</b>	Section 1x35 - 2x25 - 12x16		10/240

## Blank plates for enclosures and boards - 4,5 modules divisible by 0,5 modules

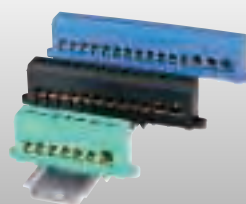
ITEM	DIMENSIONS mm	COLOUR	PACKAGING PIECES
<b>EC600TC</b>	4,5 modules DIN EN 50022 - 52x82	GREY RAL 7035	25
<b>EC600TCB</b>	4,5 modules DIN EN 50022 - 52x82	WHITE RAL 9001	25
<b>EC600TCN</b>	4,5 modules DIN EN 50022 - 52x82	BLACK	25



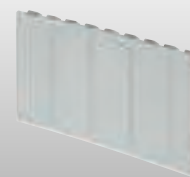
EC6312EQ



EC67018



EC890



EC600TC



## ■ PLASTIC SUPPORTS FOR TERMINAL BLOCKS **SERIES 670** BRASS TERMINAL BLOCKS **SERIES 680**

### MAIN TECHNICAL FEATURES OF SUPPORTS:

- Made of rigid thermoplastic material.
- Possibility of housing up to 4 terminal blocks.
- With self-tapping screws for fixing in all enclosures.

### MAIN TECHNICAL FEATURES OF TERMINAL BLOCKS:

- To be installed on relevant plastic supports.
- Made of CW614H brass, for earth circuits and neutral connections.
- Galvanized steel screws included and assembled and self-tapping screws for fixing.

## ■ Plastic supports for terminal blocks

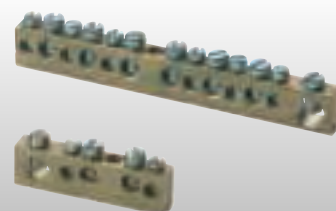
ITEM	TO BE INSTALLED IN ENCLOSURES MODULE NUMBER	PACKAGING PIECES
<b>EC67004</b>	4-8	-/10
<b>EC67012</b>	12-24-36-54-72	-/10

## ■ Brass terminal blocks

ITEM	HOLE NUMBER	HOLE DIMENSIONS mm <sup>2</sup>	PACKAGING PIECES
<b>EC680M1</b>	5	1x25 + 2x16 + 2x10	-/10
<b>EC680M2</b>	9	1x25 + 4x16 + 4x10	-/10
<b>EC680M3</b>	13	1x25 + 6x16 + 6x10	-/10
<b>EC680M4</b>	5	1x25 + 4x16	-/10
<b>EC680M5</b>	7	1x25 + 6x16	-/10
<b>EC680M6</b>	10	2x25 + 8x16	-/10



Series 670









Series 680



## CHOICE TABLE FOR WALL MOUNTING MODULAR ENCLOSURES

MODEL	DESCRIPTION	N° MODULES							
		2 MODULES	4 MODULES	8 MODULES	12 MODULES	24 MODULES	36 MODULES	54 MODULES	72 MODULES
	IP 40 RAL 7035 TRANSPARENT DOOR	-	EC60004	EC60008	EC60012	EC60024	EC60036	EC60054	-
	IP 40 RAL 9001 TRANSPARENT DOOR	-	EC60004B	EC60008B	EC60012B	EC60024B	EC60036B	EC60054B	-
	IP 40 RAL 7035 MODULAR ENCLOSURES	EC61002	EC61003	-	-	-	-	-	-
	IP 40 RAL 7035 WITHOUT DOOR	-	EC61004	EC61008	EC61012	EC61024	EC61036	EC61054	-
	IP 65 RAL 7035 WATERTIGHT	-	EC62004	EC62008	EC62012	EC62024	EC62036	EC62054	EC62072
	IP 65 RAL 3000 EMERGENCY	-	EC64004	EC64008	-	-	-	-	-
	IP 65 RAL 7035 EMERGENCY	-	EC64104	EC64108	-	-	-	-	-
	INSTALLATION KIT WITH SUPPORTS INCLUDED	IP 40	EC6004EQ	EC6008EQ	EC6012EQ	EC6024EQ	EC6036EQ	EC6054EQ	EC6054EQ
	INSTALLATION KIT WITH SUPPORTS INCLUDED	IP 65	EC6204EQ	EC6208EQ	EC6212EQ	EC6224EQ	EC6236EQ	EC6254EQ	EC6254EQ
	SUPPORTS FOR TERMINAL BLOCKS	-	EC67004	EC67004	EC67012	EC67012	EC67012	EC67012	EC67012

## CHOICE TABLE FOR FLUSH MOUNTING MODULAR ENCLOSURES

		N° MODULES						
MODEL	DESCRIPTION	4 MODULES	8 MODULES	12 MODULES	24 MODULES	36 MODULES	54 MODULES	72 MODULES
	IP 40 RAL 7035 TRANSPARENT DOOR	EC63004	EC63008	EC63012	EC63024	EC63036	EC63054	EC63072
	IP 40 RAL 9001 TRANSPARENT DOOR	EC63004B	EC63008B	EC63012B	EC63024B	EC63036B	EC63054B	EC63072B
	IP 40 RAL 9001 SOLID DOOR	EC63004C	EC63008C	EC63012C	EC63024C	EC63036C	EC63054C	EC63072C
	IP 40 BLACK TRANSPARENT DOOR	EC63004N	EC63008N	EC63012N	EC63024N	EC63036N	EC63054N	EC63072N
	INSTALLATION KIT WITH SUPPORTS INCLUDED	EC6304EQ	EC6308EQ	EC6312EQ	EC6324EQ	EC6336EQ	EC6354EQ	EC6354EQ
	SUPPORTS FOR TERMINAL BLOCKS	EC67004	EC67004	EC67012	EC67012	EC67012	EC67012	EC67012

## CHOICE TABLE FOR TERMINAL BLOCKS

		SECTION 6,5 x 9 mm			SECTION 10 x 15 mm		
MODEL	HOLE NUMBER / SECTION	EC680M1 (5 HOLES)	EC680M2 (9 HOLES)	EC680M3 (13 HOLES)	EC680M4 (5 HOLES)	EC680M5 (7 HOLES)	EC680M6 (10 HOLES)
 	25 mm²	1 hole	1 hole	1 hole	1 hole	1 hole	2 holes
	16 mm²	2 holes	4 holes	6 holes	4 holes	6 holes	8 holes
	10 mm²	2 holes	4 holes	6 holes	-	-	-