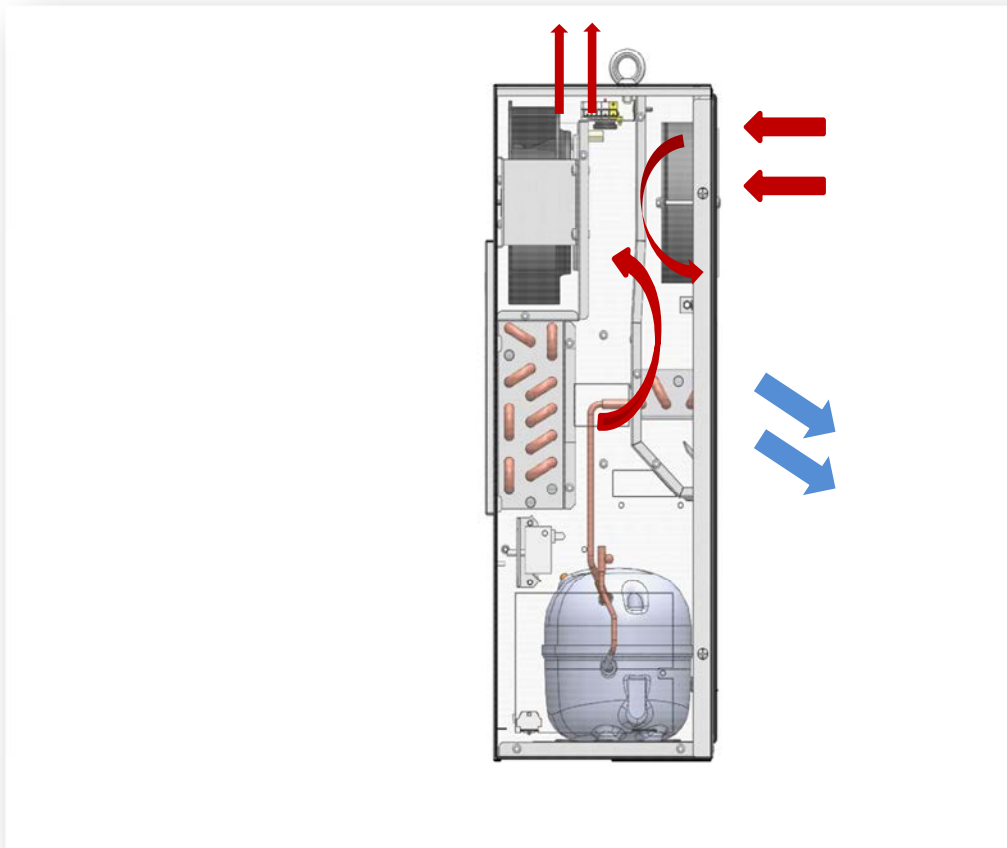




# WHY DKC



***Innovative air flow: the heat bag generated by the condenser coil is drawn by a radial fan placed upon the coil; this ensure a better condensation of the cooler.***



***Compressor valve: this component allows an easy recharge of the gas in case of needing.***



***Visible components are easy to replace during maintenance. The side holes allows to easily view the entire cycle of the cooler . Full and metal frame - resistant to impact from transport and handling.***



***Polyurethane seal applied by continuous molding: by our background on enclosures we derived this sealing system, that reduces mounting operations and give a better fit of our coolers.***

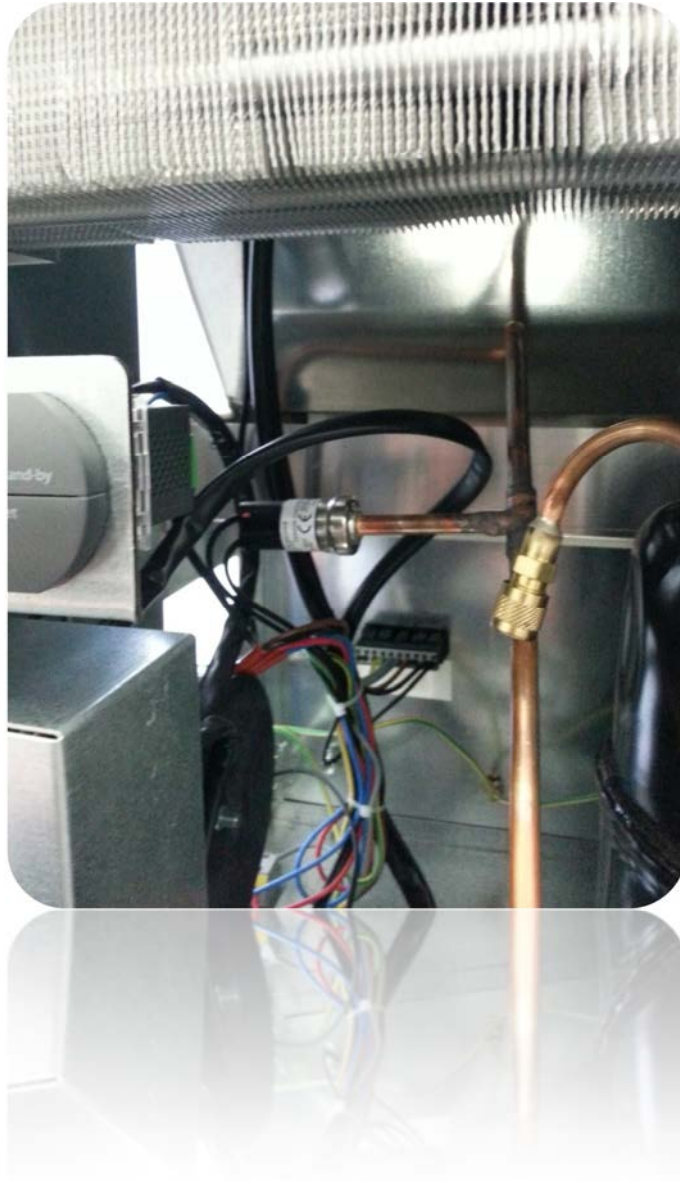
***The spring-loaded terminals for power and control of our air conditioners are particularly resistant and protect the installer from accidental bumps and vibration problems.***



***3 levels of condensation control for roof air conditioners***

- condensation sink***
- Filling valve***
- Electronic float system***





***Control Pressostat to check the pressure on the compressor***



***Filter grid is provided on every cooler and keep safe all the components inside the enclosure.***