

“TOP” Version



- With digital thermostat
- With polyurethane seal applied by continuous moulding
- With Air Filter
- With Condensate Dissipator
- With Alarm Monitoring
- With Remote ON/OFF
- With RS485 Serial Communication

- Only 2 Size for cooling power from 1000 to 4000 Watt

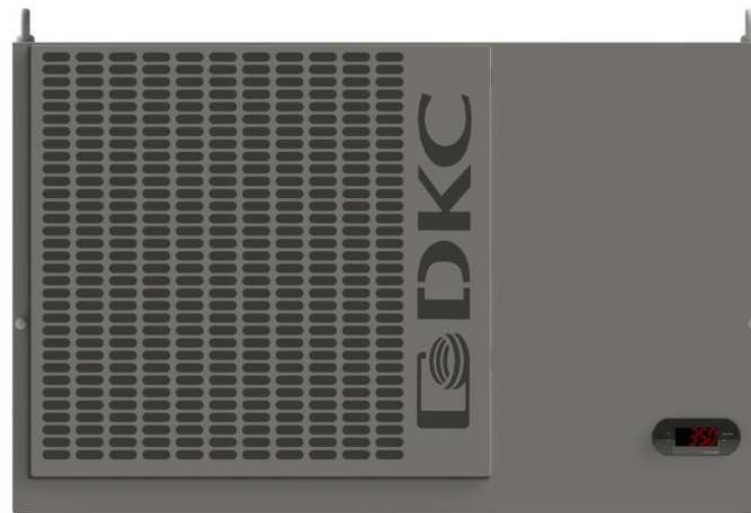
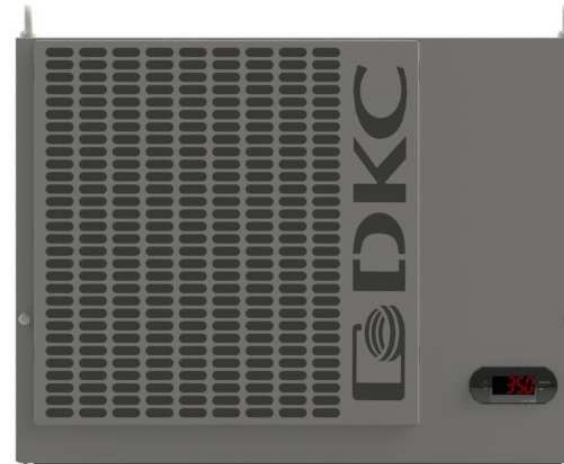
Usership Benefit

Uniformity of Mounting Cutout templates with different cooling power

- All the Cooling Units with 3-phase current are built to operate with power supply 400V/50Hz and 460V/60 Hz.

Usership Benefit

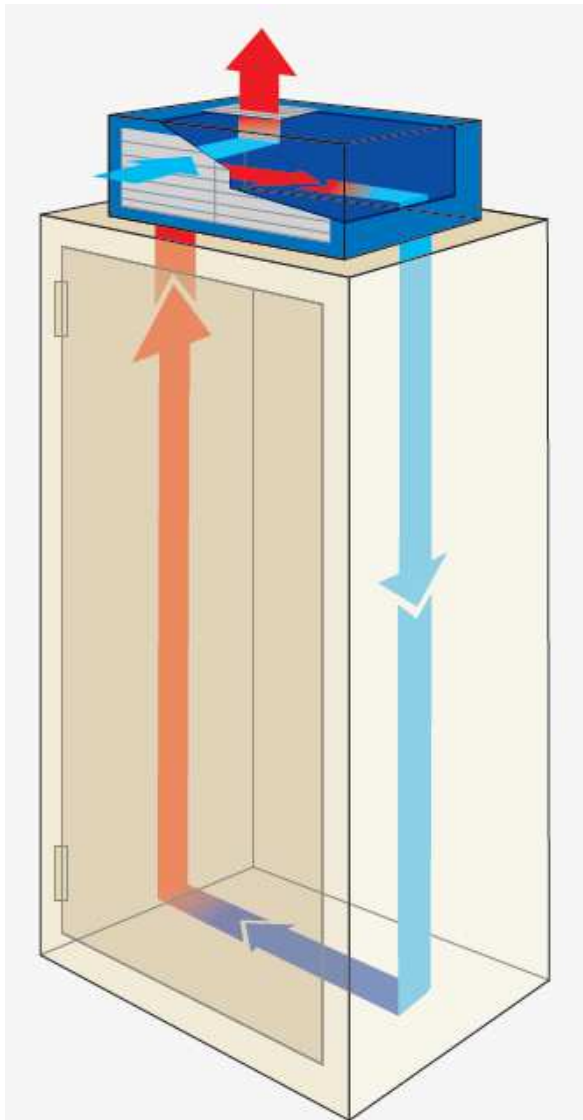
Transformers installation for export applications will not necessary any more



“TOP” Version



- With digital thermostat
- With polyurethane seal applied by continuous moulding
- With Air Filter
- With Condensate Dissipator
- With Alarm Monitoring
- With Remote ON/OFF
- With RS485 Serial Communication
- Special safety unit, which stops the device in case of a condensate drain failure



Air circulation in the external circuit

- Front air inlet, hot air output from the upper part

Usership Benefit

No restrictions for roof installation and enclosures baying

All versions



Seal

polyurethane seal applied by continuous moulding as standard on all the units contributing to a considerable installation time saving.

BASE & TOP versions



Filter grid

provided with the innovating "click&go" fixing system simplifying service activities customizable both in terms of colour and logo

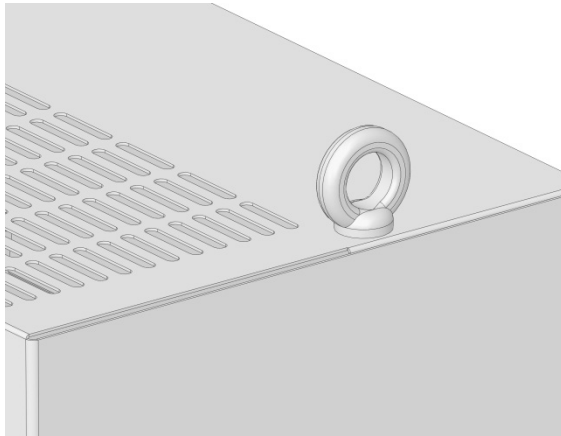
BASE & TOP versions



Condensate evaporator

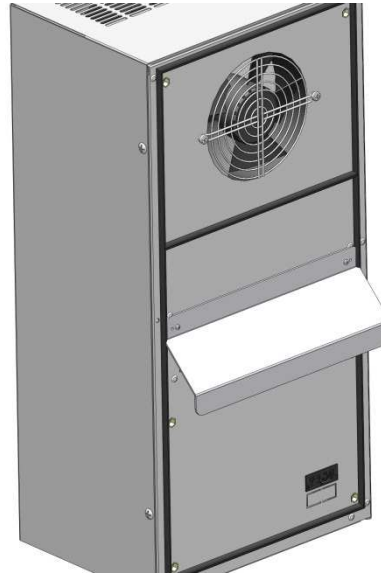
provided for BASE and TOP wall mount versions and standard for the whole roof mount range . Special safety unit is mounted on Roof-mount Versions

All versions



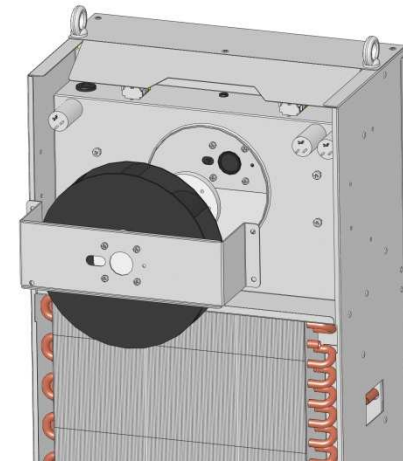
Lifting eyebolts
provided with all the versions
in order to facilitate
installation activities

All versions



Internal deflector
optional purposed to prevent thermal
short circuits inside the enclosure
(only for wall mount version)

All versions



Easy maintenance
by virtue of the accessibility to
components with no necessity of
Particular disassembly operations

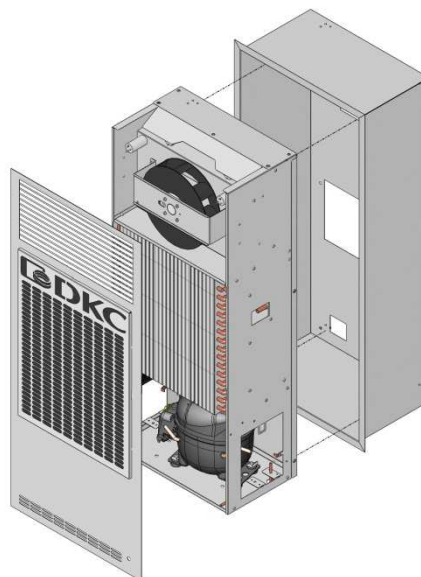
Optional



Cover INOX

Covers of AISI 304 or AISI 316L stainless steel are available for food industry environments or wherever high hygiene standards are required

Optional



Frame

for semi-inbuilt/inbuilt installation
(only for wall mount version)

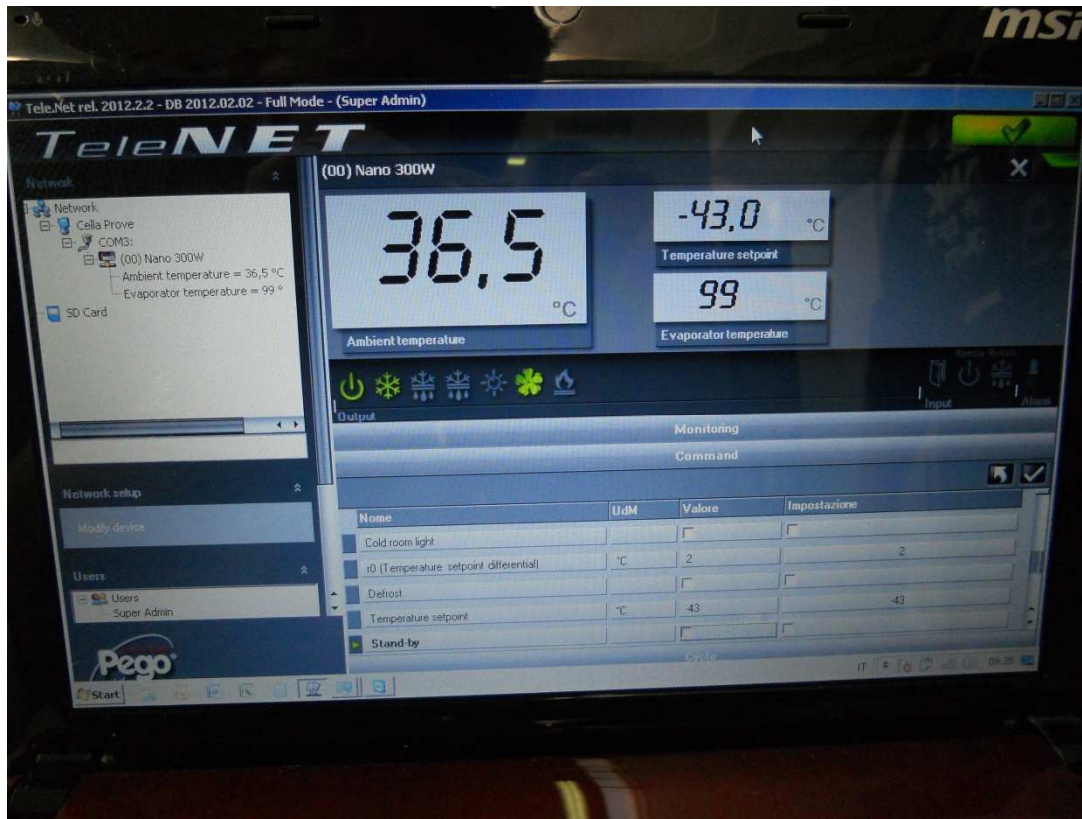
Optional



Metallic filter

to be used in particularly harsh environments
(presence of oils and particularly aggressive substances)

RS 485 Communication (TOP Version):



- Possibility to control up to 32 devices by means of one serial communication
- Alarm monitoring
- Device settings modification
- Remote ON/OFF